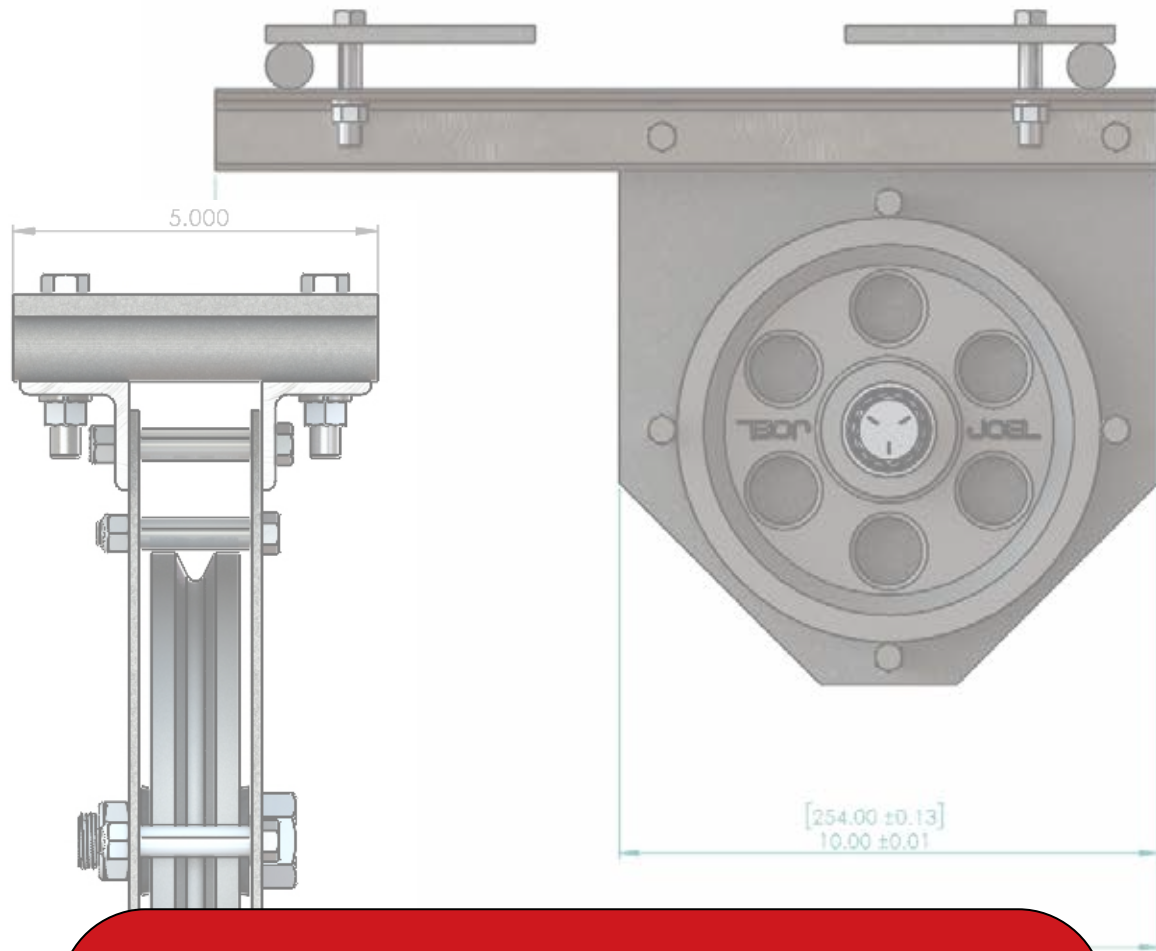


JOEL THEATRICAL PRODUCT CATALOG



JOEL

SHOWSDT

2024

© 2024 JOEL Theatrical Rigging Contractors (1980) Ltd.

JOEL THEATRICAL PRODUCT CATALOG

Welcome to the **JOEL RIGGING** product catalog!

In this second edition, we are showing our most popular products. Please contact us if you don't find information here on the product that you are looking for. We have an extensive range of stage and curtain track hardware and accessories.

JOEL RIGGING also carries life safety equipment and tools for rigging other than the ones shown here.

JOEL RIGGING is also able to custom fabricate the equipment to meet the unique requirement of your project.

Contact us today for additional information and be on the lookout as we continue to add products in future editions.

TORONTO OFFICE

375 Watline Avenue
Mississauga, Ontario,
Canada
L4Z 1P3

1 905 890-8802

info@joeltheatrical.com

Inside Sales

sales@joeltheatrical.com

© 2024 *JOEL Theatrical Rigging Contractors (1980) Ltd.*

JOEL THEATRICAL RIGGING CONTRACTORS

375 Watline Ave, Mississauga, On, L4Z 1P3
1-905-890-8802 | **JOELTHEATRICAL.COM**



COUNTERWEIGHT RIGGING

website
page link

- 12 inch Cast Iron Head Block
- 8 inch Loft Block
- 12 inch Floor Tension Block
- Mule Block
- Counterweight Arbour
- Front Load Arbour
- T Bar Channel
- Gallery Locking Rail
- Stage Locking Rail
- Rope Lock
- Truss Pipe Batten
- Lineset Elevation



STAGING, RISERS & LIFTS

- ShowSDT Scapin Risers
- ShowSDT El Presidente Risers
- ShowLift
- Gala Spiralift
- Orchestra Pit Net



SAFETY & TOOLS

- Peakworks Safety Harnesses
- Peakworks Safety Lanyards
- Peakworks Safety Beam Clamp
- Jet 1 Ton Beam Clamp
- Jet 1 Ton Chain Fall hoist



MOTORIZED RIGGING

website
page link

- ECHELON Zero Fleet Hoist
- ETC Prodigy™ Hoist
- Helical Drum
- Yo-Yo Hoist
- Imperium Console
- Pendant Pickle XLR-4
- Tour Rig 500kg SK030 lv Chain Hoist
- Tour Rig 500kg SK030 dc Chain Hoist
- 4 Channel Pendant pickle
- Tour Rig 1000kg SB4.1/12J-LV Chain Hoist
- Tour Rig 1000kg SB4.1/12J-DC Chain Hoist
- 4 Channel Hoist Controller



FIRE CURTAIN SYSTEMS

- Fire Curtains
- Fire Curtain Motor
- Electronic Fire Curtain Release Station
- FC Emergency System



CURTAINS AND TRACKS

- ShowSDT Curtains
- ADC tracks
- Motorized Automatic Curtain Draw Machine



PIPE & TENSION GRIDS

- Pipe Grid
- Tension Grid
- Mega Grid Lock
- Clevis Hanger
- Pipe Clamp



JOEL THEATRICAL RIGGING CONTRACTORS

375 Watline Ave, Mississauga, On, L4Z 1P3

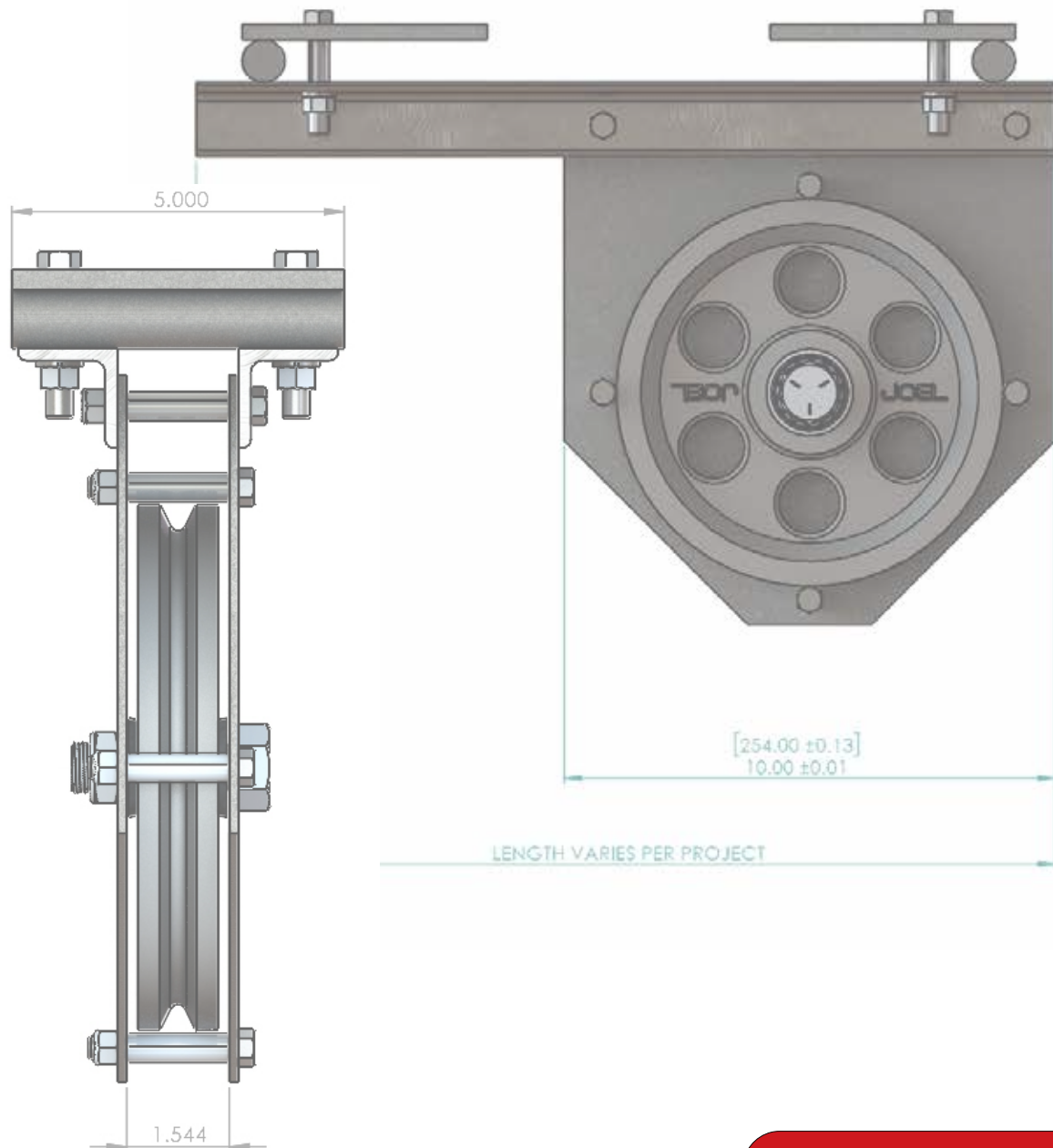
1-905-890-8802 | JOELTHEATRICAL.COM



JOEL RIGGING

COUNTERWEIGHT RIGGING

PRODUCT CATALOG

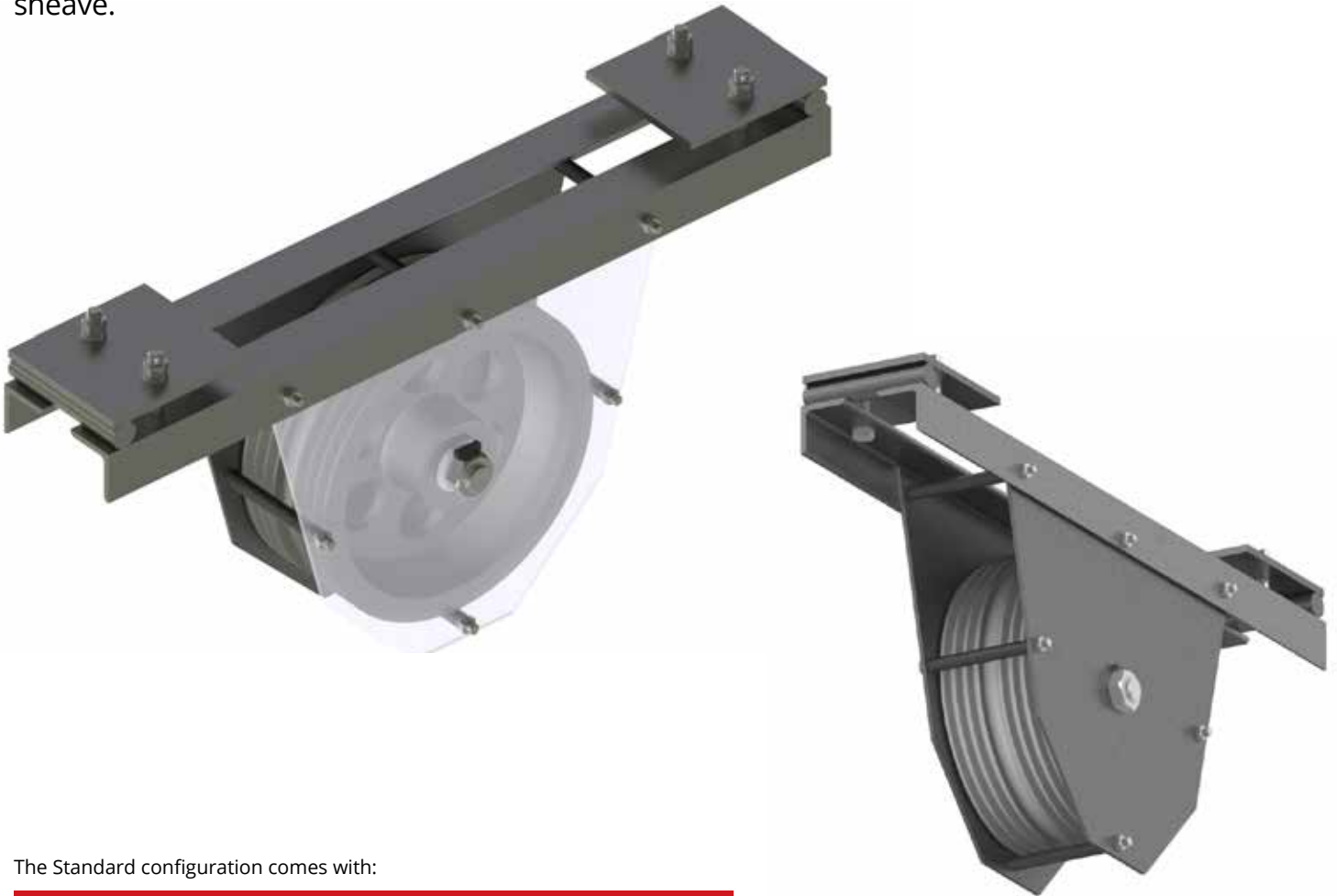


JOEL RIGGING - 12 INCH CAST IRON HEAD BLOCK

SINGLE PURCHASE, UPRIGHT / UNDER-HUNG MOUNTED

JOEL Rigging 12" Head blocks are designed to provide years of trouble-free service, built with cast iron sheaves tapered roller bearings, complete with cable retaining spacers.

Standard units are grooved for 3/4" Operating Line and 1/4" Cable(s), up to 9 cable grooves per sheave.



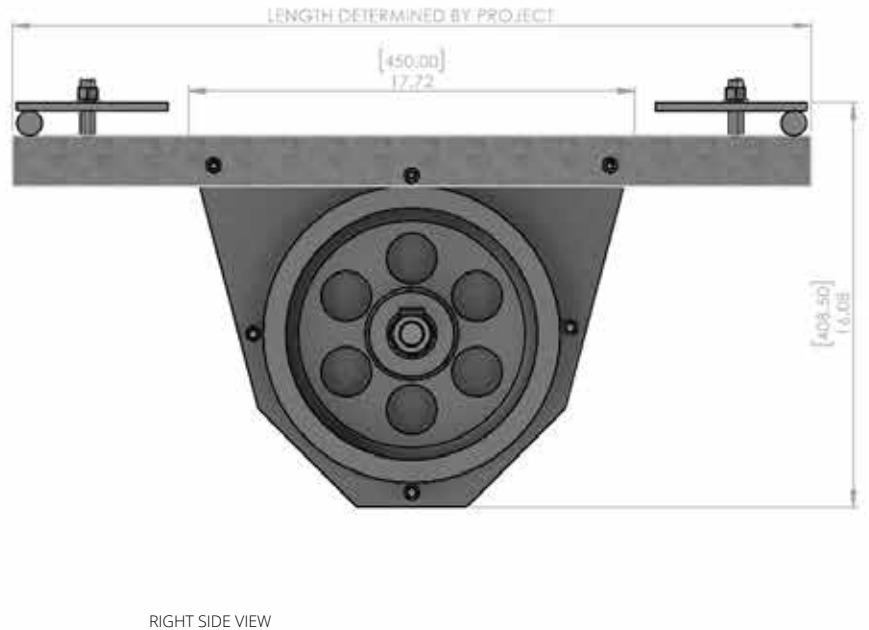
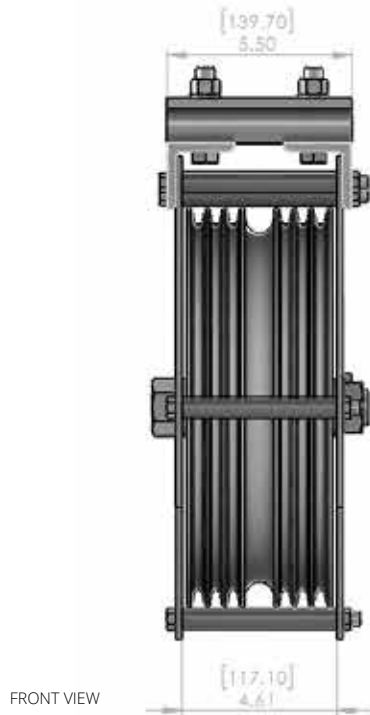
The Standard configuration comes with:

FEATURES

- Cast iron sheaves standard, steel and nylon available
- Sheaves can be configured for 6" centre mounting
- Different cable grooves available upon request
- SWL Cast iron - 2000 Lbs

JOEL RIGGING - 12 INCH CAST IRON HEAD BLOCK

SINGLE PURCHASE, UPRIGHT / UNDER-HUNG MOUNTED



TECHNICAL DATA

Model N°

- | | |
|---------------|---------------------------------------------|
| ● JOEL #43055 | 4 x 1/4" liftlines, 1 x 3/4" operating line |
| ● JOEL #53055 | 5 x 1/4" liftlines, 1 x 3/4" operating line |
| ● JOEL #63055 | 6 x 1/4" liftlines, 1 x 3/4" operating line |
| ● JOEL #73055 | 7 x 1/4" liftlines, 1 x 3/4" operating line |
| ● JOEL #83055 | 8 x 1/4" liftlines, 1 x 3/4" operating line |



JOEL RIGGING - 8 INCH LOFT BLOCK

SINGLE AND MULTI GROOVE SHEAVE

JOEL Rigging 8" Loft Blocks are designed to provide years of trouble-free service and are built with cast iron sheaves, tapered roller bearings and complete with cable retaining spacers.

JOEL Rigging also has these in 10" diameter, and 12" diameter with single grooves.

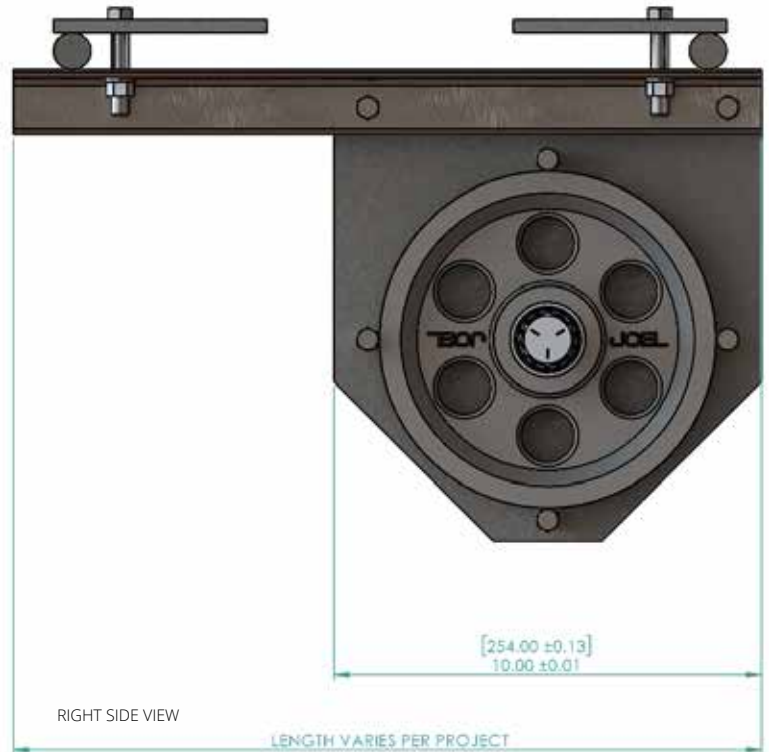
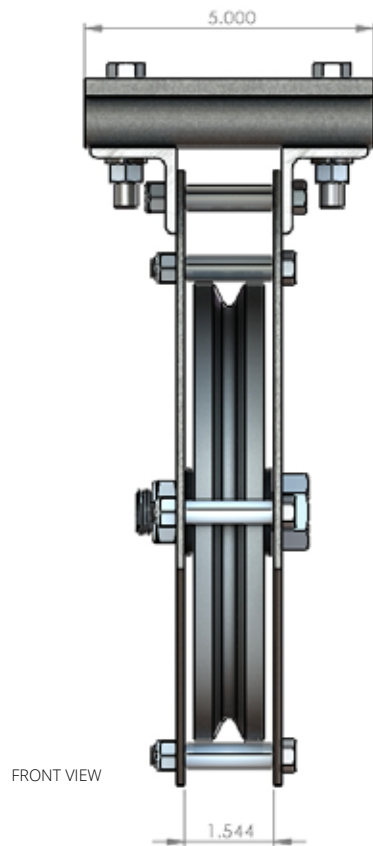


The Standard configuration comes with:

FEATURES

- Complete with Clip Plates or J Bolts as required
- 500 Pound SWL, higher load capacity available
- Available with up to 9 grooves for 1/4" Liftlines
- 10 Gauge Side plates and 3/16" thick base angles standard
- Painted Black, Red/Yellow available
- Side Plates enclose the entire sheave, preventing shearing hazards
- 4-9 Groove units, base angles are turned in to reduce foot print
- Can be mounted upright or under hung

JOEL RIGGING - 8 INCH LOFT BLOCK



TECHNICAL DATA

Model N°	
● JOEL #2055	1 x ¼" Groove
● JOEL #22055	2 x ¼" Groove
● JOEL #32055	3 x ¼" Groove
● JOEL #42055	4 x ¼" Groove
● JOEL #52055	5 x ¼" Groove

Model N°	
● JOEL #62055	6 x ¼" Groove
● JOEL #72055	7 x ¼" Groove
● JOEL #82055	8 x ¼" Groove
● JOEL #92055	9 x ¼" Groove

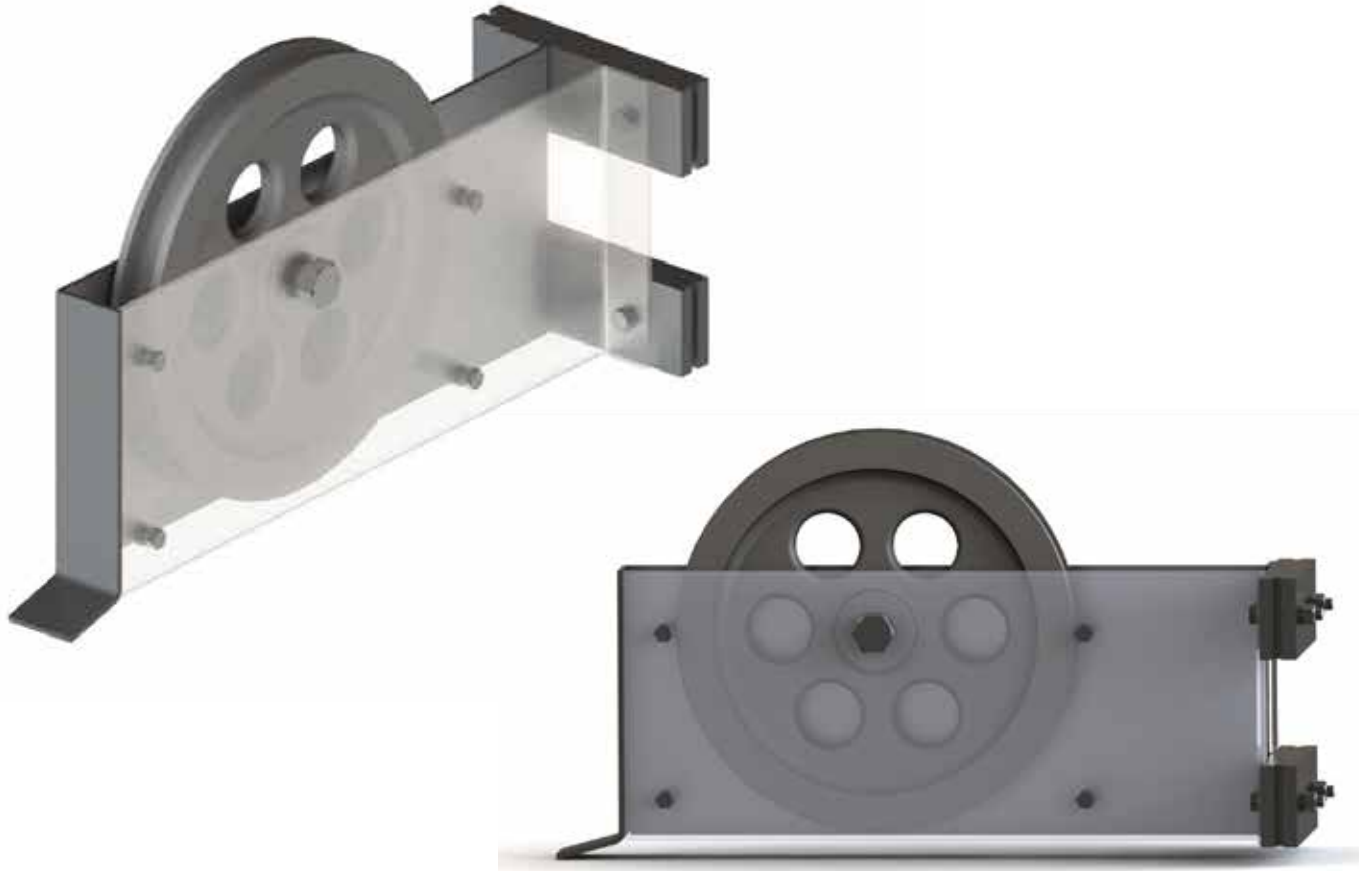


JOEL RIGGING - 12 INCH FLOOR TENSION BLOCK

Tension Block or Welsch Block

JOEL Rigging 12" Floor Tension Blocks are designed to provide years of trouble-free service. Built with cast iron sheaves bronze bushings, complete with rope retaining spacers, guide shoes and toe kick.

Standard units are grooved for 3/4" operating line.

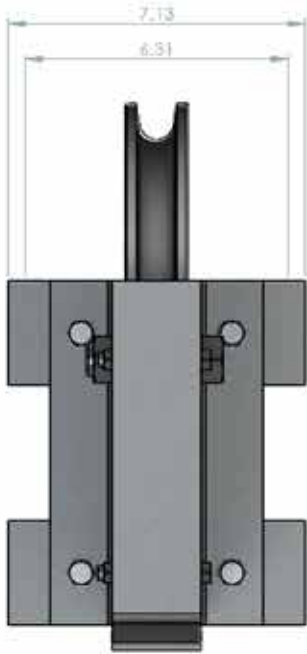


The Standard configuration comes with:

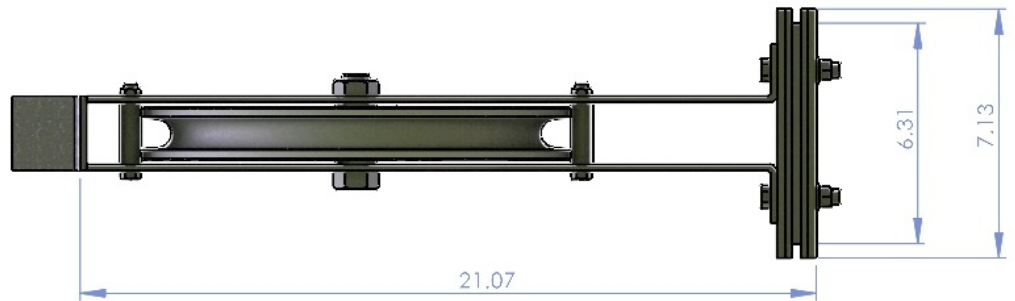
FEATURES

- 7 Gauge Side plates, cast iron sheave
- Tapered roller bearings, optional
- 7/8" Groove available upon request
- Complete with mounting hardware and Rubber Shoes

JOEL RIGGING - 12 INCH FLOOR TENSION BLOCK



FRONT VIEW



TOP VIEW

TECHNICAL DATA

● Model N°	
● JOEL #3015-B	Bronze Bushings
JOEL #3015-T	Tapered Bearings
● Suffix *6	Configured for 6" Centres



JOEL RIGGING MULE BLOCK

MULE BLOCK OR DIVERTER BLOCK

JOEL Rigging Mule Blocks are used to redirect the path of one or more cables around an obstacle, such as structure. The mule blocks are configured to support 1 or more cables as required and typically used in pairs to create offset insets.

Available with Cast Iron or Steel sheaves as required for the load capacity.

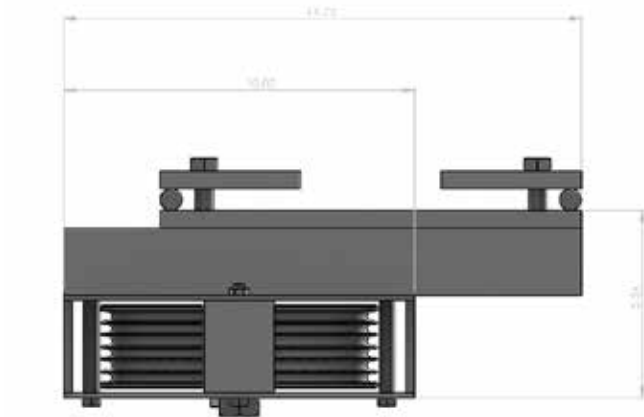


The Standard configuration comes with:

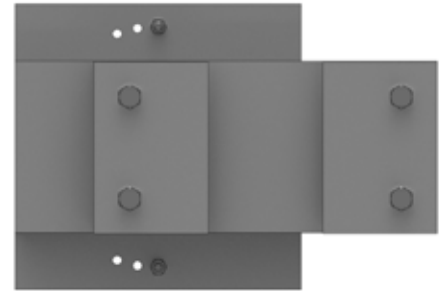
FEATURES

- Standard Groove for 1/4" Cable, other groove sizes available
- Painted Black
- Complete with Clip plates
- Cast Iron Sheaves, WWL up to 500 lbs
- Steel sheaves, working load limit (WLL) > 500 lbs
- Tapered Roller Bearings
- Shaft secured to prevent rotation

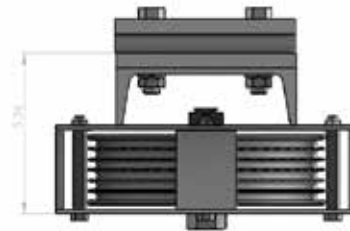
JOEL RIGGING MULE BLOCK



FRONT VIEW



TOP VIEW



RIGHT SIDE VIEW

TECHNICAL DATA

● Model N°		● Model N°	
● JOEL #2055-MB	1 (1/4") Groove	● JOEL #62055-MB	6 (1/4") Groove
● JOEL #22055-MB	2 (1/4") Groove	● JOEL #72055-MB	7 (1/4") Groove
● JOEL #32055-MB	3 (1/4") Groove	● JOEL #82055-MB	8 (1/4") Groove
● JOEL #42055-MB	4 (1/4") Groove	● JOEL #92055-MB	9 (1/4") Groove
● JOEL #52055-MB	5 (1/4") Groove	● Add Suffix -S for Steel Sheave	



JOEL RIGGING

COUNTERWEIGHT ARBOUR

ASSEMBLY

Counterweight Arbour Assemblies

JOEL Rigging Rod Style Counterweight Arbour Assemblies are designed to provide years of trouble-free service, built with steel tops and bottoms, spreader plates provided every 24" in the counterweight stack and complete with guide shoes.

Top spreader plate supplied with locking collars and thumbscrews.

The Standard configuration comes with:

FEATURES

- Complete with shoes to suit wall frame
- Painted Black
- Backplate marked for spreader plate locations
- Standard 3/4" Rods
- Standard load Capacity, 2000 lbs.
- Length to suit required load capacity
- Larger load capacity available upon request
- Single purchase shown, also available in Double purchase

Contact JOEL Rigging for project specific requirements:

JOEL THEATRICAL RIGGING CONTRACTORS

375 Watline Ave, Mississauga, On, L4Z 1P3

1-905-890-8802 | JOELTHEATRICAL.COM



JOEL RIGGING - FRONT LOAD ARBOUR

Front Loading Carriage /Arbour

JOEL Rigging Front Loading carriages are designed to simplify and reduce risks during counterweight loading. Counterweights are introduced into the carriage thru the onstage face, reducing reaching, bending and stretching as opposed to loading a traditional counterweight carriage. Once loaded, counterweights are secured in place with a continuous locking rod.

Counterweight bricks may be loaded on any shelf as is convenient for the operator. Shelves are sloped down to the rear of the carriage, to assist in safe loading and unloading.

As the counterweights are inserted directly on to the shelves, the overall length is shorter than a traditional carriage. Allowing longer batten travel distance.

Front Load Carriages are designed to be bolted together to securely connect several linesets together for heavy scenery applications.

Available in 2, 3 and 4 Shelf designs.

Also available in double purchase configurations



The Standard configuration comes with:

FEATURES

- Complete with shoes to suit wall frame
- Painted Black
- Locking bar restrains counterweight bricks
- Tie offs for up to 12 liftlines
- Complete with thimbles for Operating Line

JOEL RIGGING - FRONT LOAD ARBOUR

2 SHELF MODEL SHOWN:



FRONT VIEW



RIGHT SIDE VIEW



ANGLE VIEW

TECHNICAL DATA

● Model N°	Single Purchase	● Model N°	Double Purchase
● JFL-2-1	800 lbs capacity	● JFL-2-2	800 lbs capacity
● JFL-3-1	1200 lbs capacity	● JFL- 3-2	1200 lbs capacity
JFL-4-1	1600 lbs capacity	● JFL-4-2	1600 lbs capacity



JOEL RIGGING T BAR

T Channel

This innovative design revolutionizes the installation of counterweight rigging system wall frames. JOEL Rigging Aluminum T-Channel has superior strength than traditional steel T profiles. The profile permits mounting hardware along its entire length thereby reducing installation time and costs as compared to traditional steel guide systems.

The JOEL Rigging Aluminum T-Channel provides the guiding system for JOEL Rigging counterweight carriages and floor blocks. The top stop, bottom stop and floor batten are fastened to the face of the T Channel.

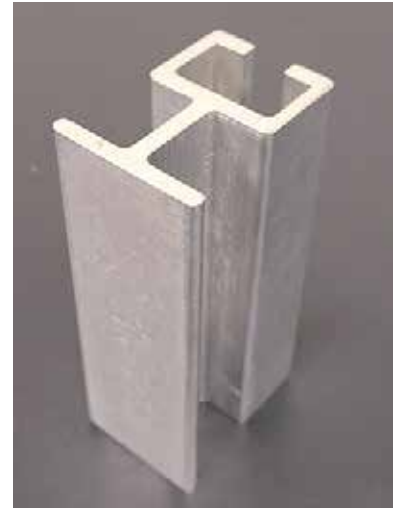
JOEL Rigging Aluminum T-Channel can be supplied up to 36' long, reducing the number of splices and fittings required for installation.

Supports for the index lighting pipe and scenery leaning pipe are site installed to not conflict with operation of the linesets.

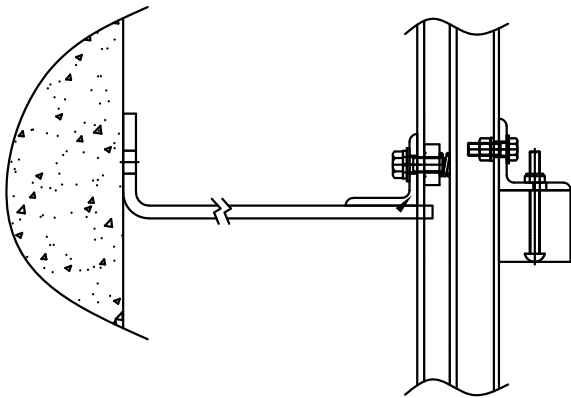
The Standard configuration comes with:

FEATURES

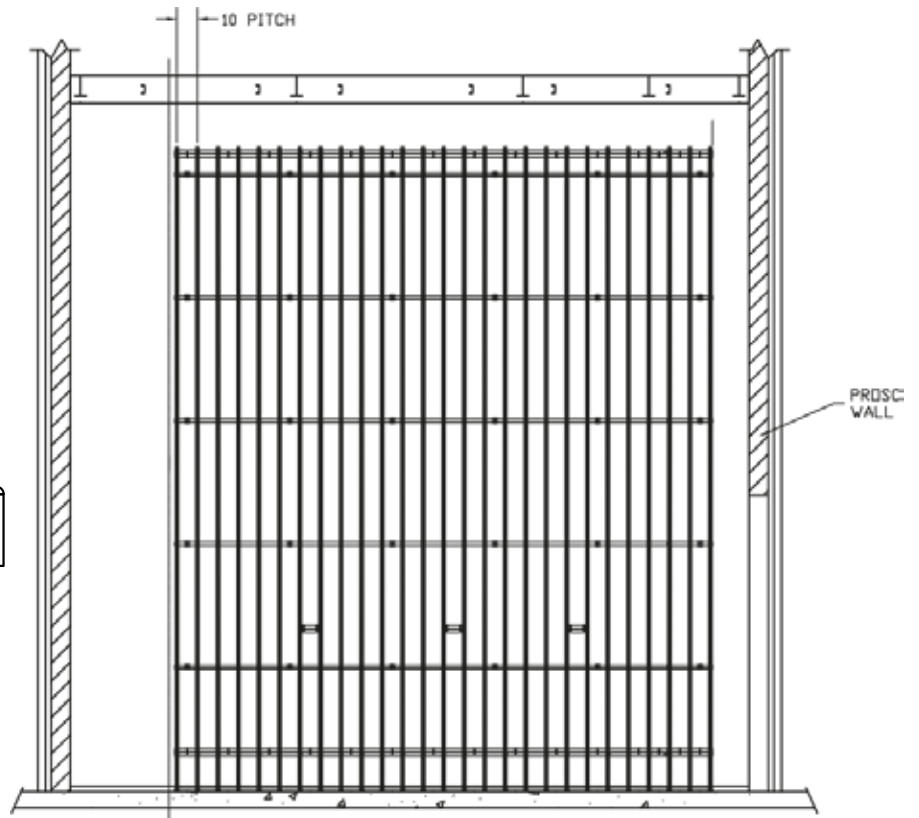
- Standard length 20'
- Standard Finish bare
- Black anodized available
- Available upto 36' long



JOEL RIGGING T BAR



SIDE VIEW - DETAIL



PARTIAL ELEVATION - TYPICAL



JOEL RIGGING GALLERY LOCKING RAIL

Gallery Mounted

Supports JOEL Rigging Rope locks and the write-on strips to identify linesets.

Rope locks are mounted to 3" x 2" x 5/16" angle, the write-on strip is mounted at an angle for easy viewing.

Constructed to withstand a 500 lbs per linear foot (744.5 kg/m) up load (RWL).

Write-on strips can be written on using erasable marker or grease pencil.

Mounts to the edge of a counterweight pit or gallery.

Mounting method must be able to withstand the imposed load.

Mounting stanchions are located on 5' (1.52m) (maximum) centers and made from 2" x 3" x 5/16" steel angle.

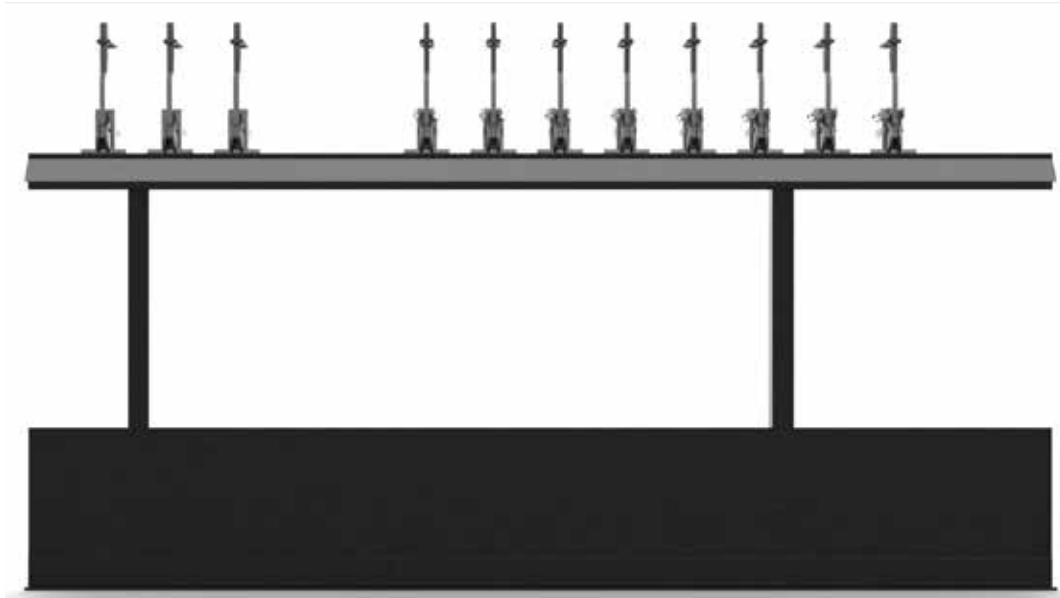


The Standard configuration comes with:

FEATURES

- Top face drilled for JOEL Rope Locks, to suit linset centres
- 12" tall Kick plate
- Continuous write-on strips
- Painted Black
- Optional: Top face drilled to suit eye bolts for tie offs
- Optional: Capstan HSS tube (inplace of kickplate)

JOEL RIGGING GALLERY LOCKING RAIL



FRONT VIEW



SIDE VIEW

JOEL THEATRICAL RIGGING CONTRACTORS
375 Watline Ave, Mississauga, On, L4Z 1P3
1-905-890-8802 | JOELTHEATRICAL.COM



JOEL RIGGING STAGE LOCKING RAIL

Stage Floor Mounted

Supports JOEL Rigging Rope locks and the write-on strip to identify linesets.

Rope locks are mounted to 3" x 2" x 5/16" Angle, the write on strips is mounted on an angle for easy viewing.

Constructed to withstand a 500 lbs per linear foot (744.5 kg/m) up load (RWL).

Write on strips can be written on using erasable marker or grease pencil.

Mounts to the Stage floor at the bottom of the counterweight wall frame.

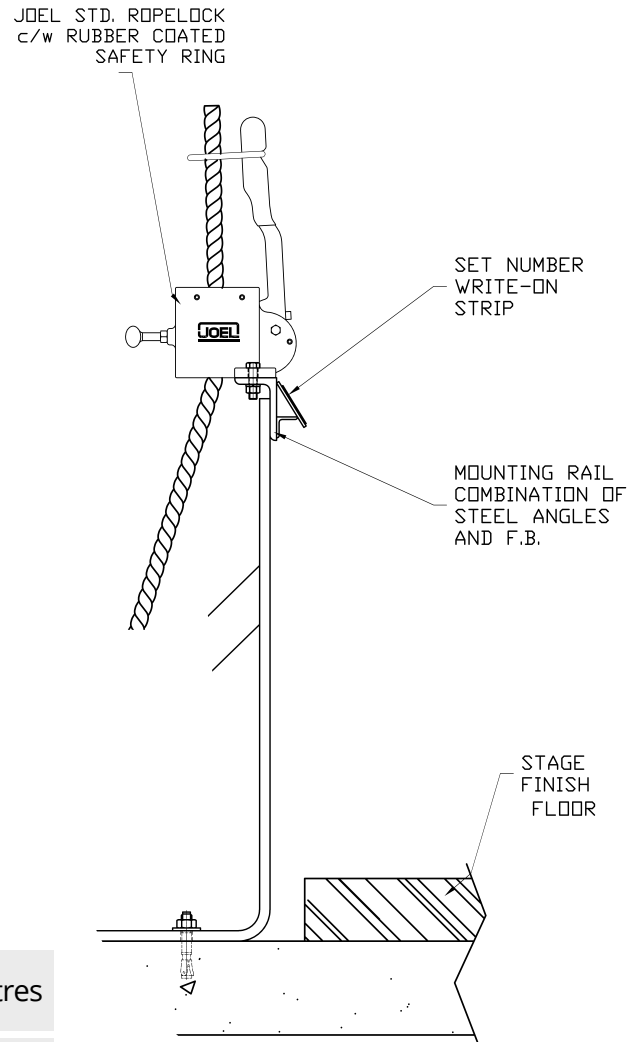
Mounting method must be able to withstand the imposed load.

Mounting stanchions are located on 5' (1.52m) (maximum) centers and made from 1/2" thick x 3" Wide Flatbar.

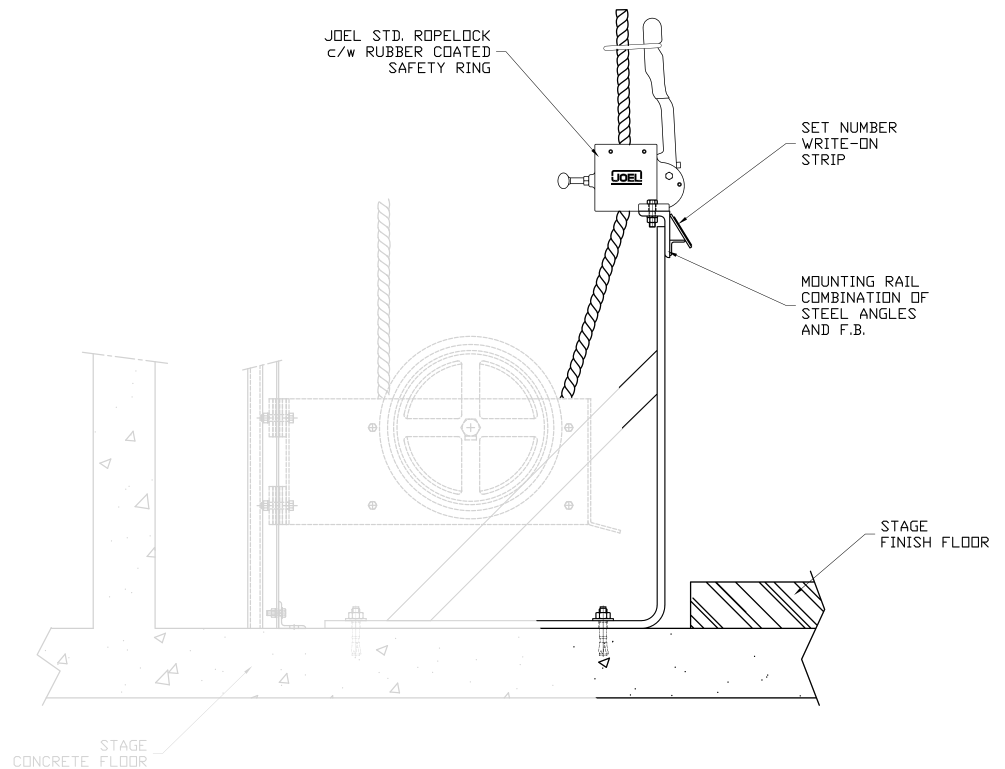
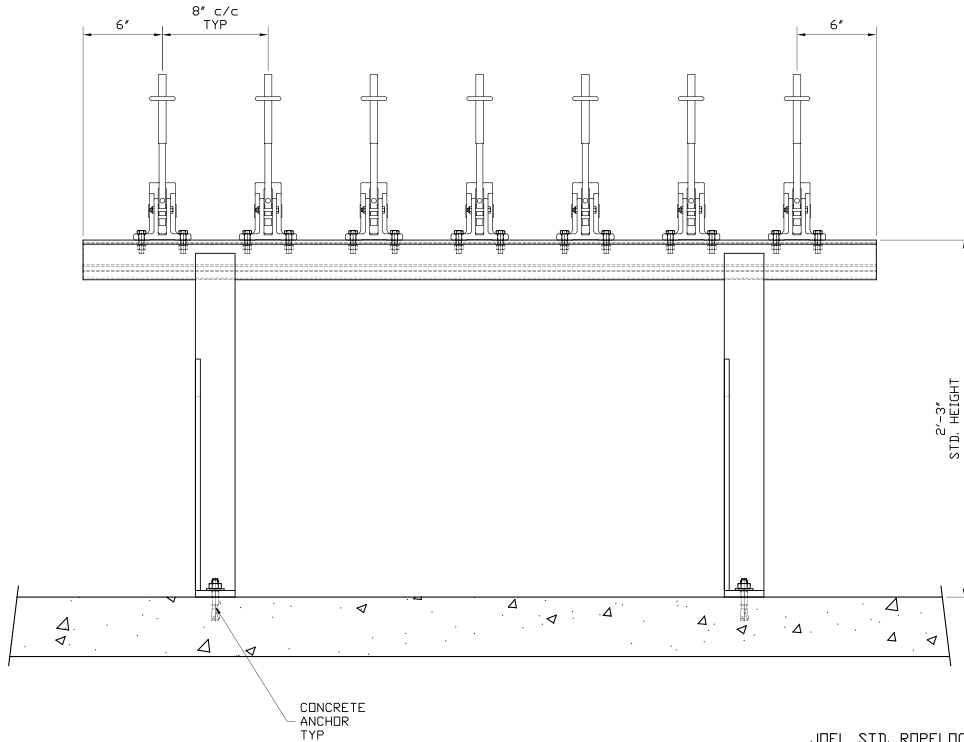
The Standard configuration comes with:

FEATURES

- Top face drilled for JOEL Rigging Rope Locks, to suit linset centres
- Continuous write-on strips
- Painted Black
- Optional: Top face drilled to suit eye bolts for tie offs
- Optional: Capstan HSS tube



JOEL RIGGING STAGE LOCKING RAIL



JOEL THEATRICAL RIGGING CONTRACTORS
375 Watline Ave, Mississauga, On, L4Z 1P3
1-905-890-8802 | JOELTHEATRICAL.COM



V2.1.0122



JOEL RIGGING ROPE LOCK

Rope Lock or Operating Line Lock

JOEL Rigging Rope Locks, have cast iron body, hardened dogs and handle. Handle and ring are red rubber coated, with a silencing bumper built in to reduce noise during operation. Complete with thumbscrew for adjustment of the ropelock.

Drilled to suit JOEL Rigging Standard Locking Rails, Rope locks are designed to maintain the position of a balanced load, max inbalance 50 lbs.

JOEL Rigging Rope locks are not to be used to control a linset in motion or as a braking device.



SHOWN WITH OPTIONAL LOCKING TABS.

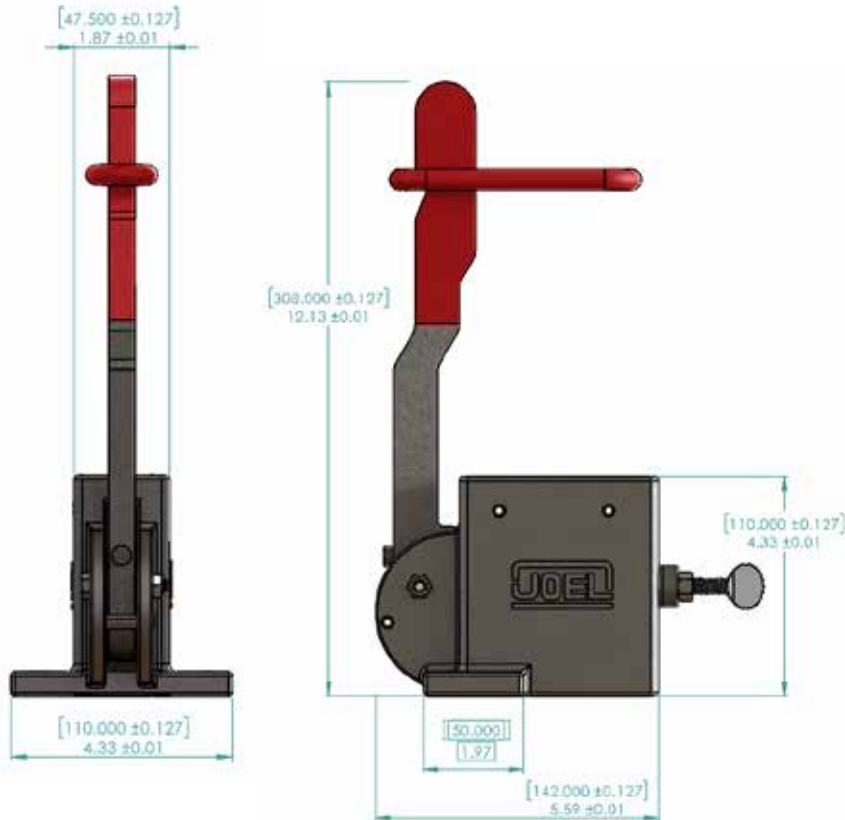
The Standard configuration comes with:

FEATURES

- Drilled on 80 mm Centres for JOEL Locking Rails
- Red rubber coated Handle and Ring
- Locks at top dead centre
- Thumbscrew adjustment for different operating line diameters
- Locking tabs and padlock available
- Can be drilled to suit other locking rails
- Thumbscrew can be replaced with a set screw for limited clearance

JOEL RIGGING ROPE LOCK

STANDARD JOEL ROPE LOCK VIEWS:



FRONT VIEW

RIGHT SIDE VIEW



INSIDE VIEW

TECHNICAL DATA

Model N°	
• 250-U	Standard JOEL Rigging Ropelock
• 250-U-PL	Ropelock with additional locking tabs and padlock

JOEL THEATRICAL RIGGING CONTRACTORS
375 Watline Ave, Mississauga, On, L4Z 1P3
1-905-890-8802 | JOELTHEATRICAL.COM



V2.1_0122



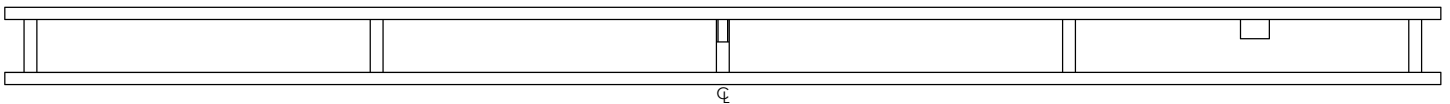
JOEL RIGGING - TRUSS PIPE BATTEN

Ladder Truss

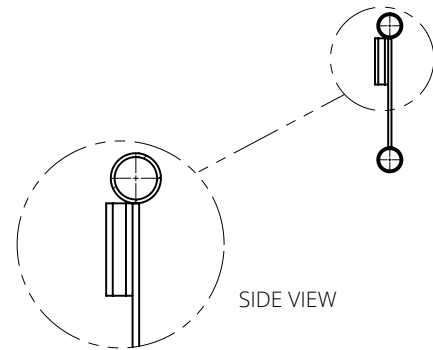
JOEL Rigging Ladder Truss provides a more rigid batten assembly as compared to a standard single batten. This rigidity permits higher load capacity per foot, larger spans between lift lines and the opportunity to dress cables to the top cord, keeping the bottom chord clear for lighting, audio or scenery.

Verticals are available in flatbar or pipe.

Sections are joined to create complete battens using JOEL Rigging's standard internal splices and mechanical fasteners



TYPICAL: CUSTOM FABRICATED ACCORDING TO PROJECT REQUIREMENTS



The Standard configuration comes with:

FEATURES

- 1 1/2" Sch 40 pipe standard
- Sections upto 24' long
- Sections can be spliced together for longer battens
- Batten Extensions available
- Painted Black
- Footage markings available

JOEL THEATRICAL RIGGING CONTRACTORS

375 Watline Ave, Mississauga, On, L4Z 1P3
1-905-890-8802 | JOELTHEATRICAL.COM



V2.1_0122



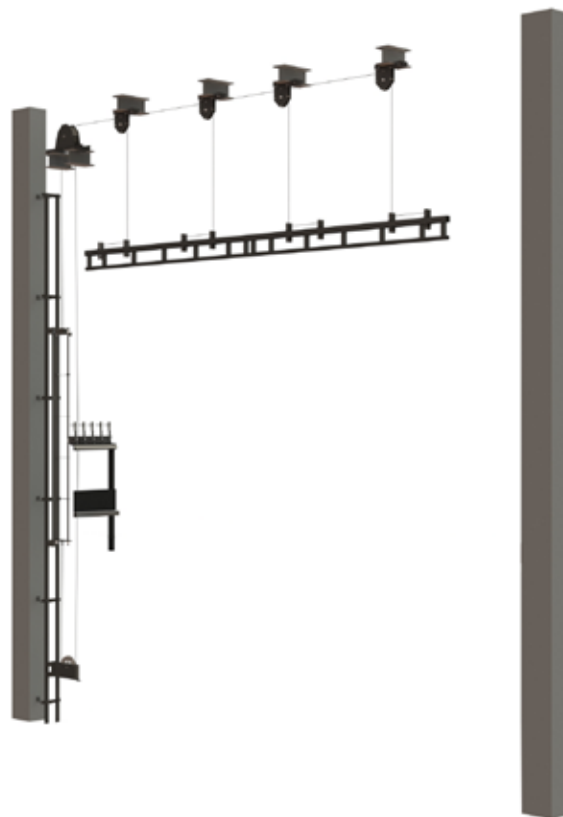
JOEL RIGGING LINESET ELEVATION

Single Purchase Counterweight Rigging system

Counterweight rigging systems are the backbone of theatrical productions, providing the capacity to complete scenery changes. Supporting lighting, audio, video equipment and drapery above the stage performance space.

Theatrical equipment/scenery is connected to the batten at stage level, weights to balance the load are introduced to the carriage and the position of the scenery adjusted manually by theatre technical staff.

The headblock is supported by liftlines, which run over the loftblocks and converge at the headblock. Which collects the liftlines and operating line, guiding them to the counterweight carriage. Operation of the lineset is controlled with the operating line and rope lock on the locking rail. The carriage is held in place with a captive guiding system constructed of JOEL Rigging T-Bar into a wall frame structure.

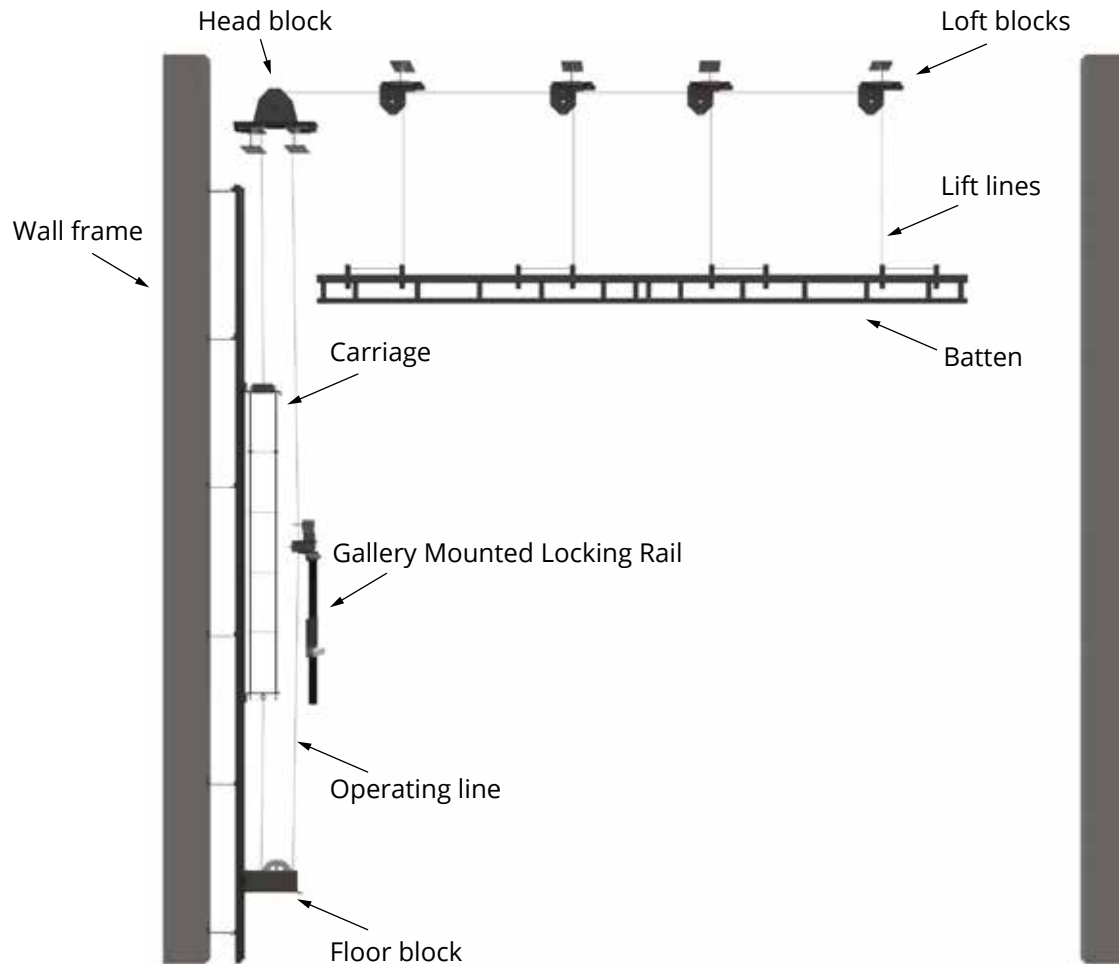


The Standard configuration comes with:

FEATURES

- JOEL Rigging Headblock
- JOEL Rigging Loftblock
- JOEL Rigging Carriage
- JOEL Rigging Locking Rail, with JOEL Ropelock
- JOEL Rigging Floorblock
- JOEL Rigging Batten

JOEL RIGGING LINESET ELEVATION

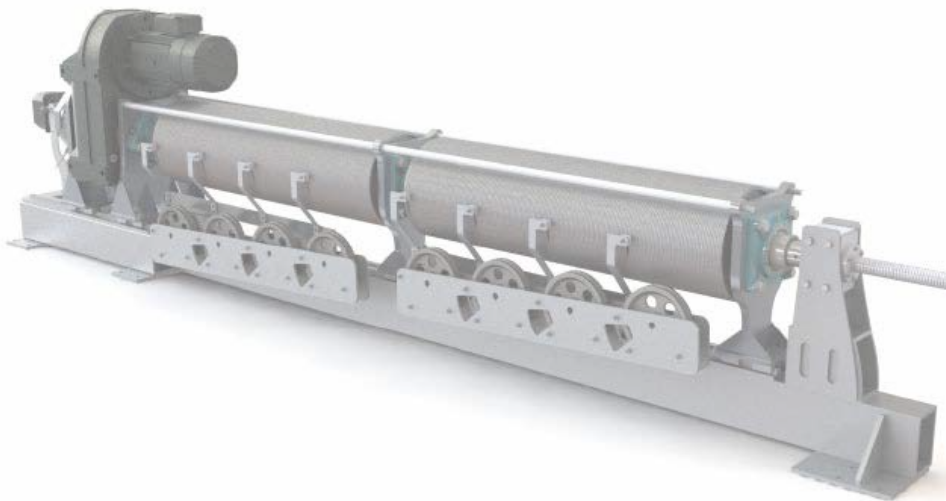
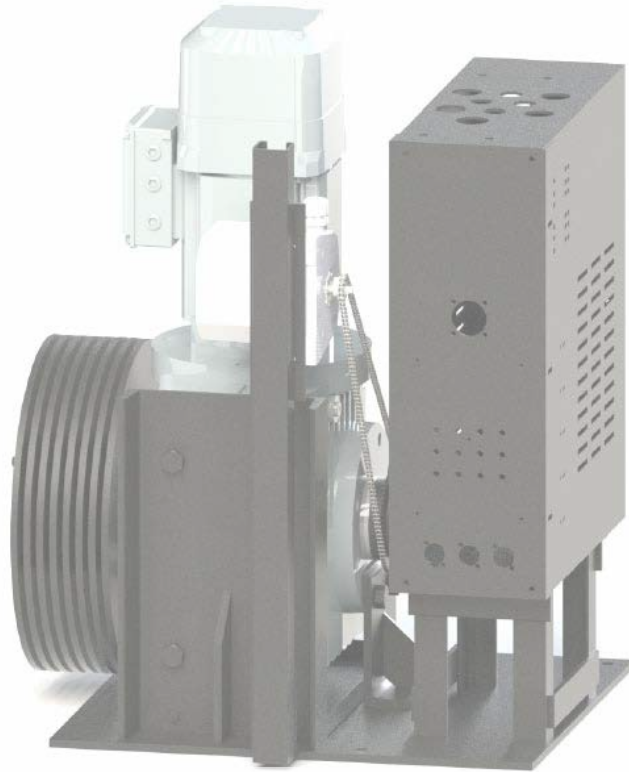


FRONT VIEW

JOEL RIGGING

MOTORIZED RIGGING

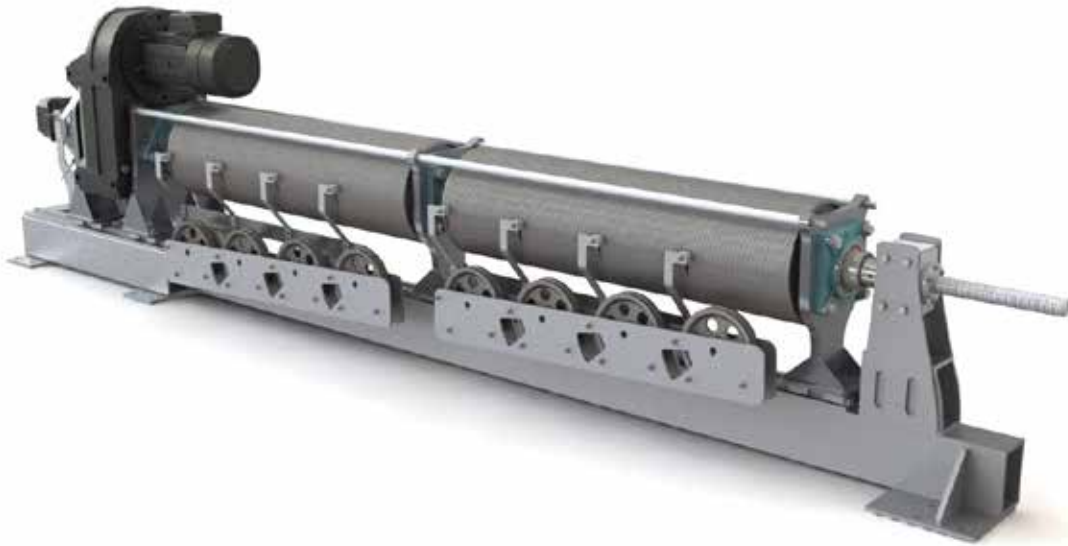
PRODUCT CATALOG



JOEL RIGGING - ECHELON ZERO FLEET WINCH

ECHELON Hoist

JOEL Rigging's newest innovation, the ECHELON Zero-Fleet hoist is the culmination of years of experience designing, building and perfecting hoists specifically for the theatrical rigging industry. Designed for unparalleled strength, quiet operation, long service life and maximum flexibility.



The Standard configuration comes with:

FEATURES

- Load sensing and slack line detection
- Capacity, 500 lbs - 3000 lbs
- 4-8 liftlines
- 1/4" Liftlines
- Secondary load brake
- Regular/Overtravel limits standard, encoder optional

JOEL THEATRICAL RIGGING CONTRACTORS

375 Watline Ave, Mississauga, On, L4Z 1P3
1-905-890-8802 | JOELTHEATRICAL.COM



V2.1_0122



JOEL RIGGING ETC

GENERAL PURPOSE HOISTS

The ETC Prodigy™ General Purpose Hoists provide a simple, low cost way to lift heavy scenery or curtains for storage or for production.

These hoists resolve space and access challenges for schools, nightclubs, houses of worship and other places where there is no mean to access scenery or drapes overhead. JOEL Rigging is a certified dealer and installer of ETC rigging products. Contact us for more detailed information on this product or other ETC Rigging products.



The Standard configuration comes with:

FEATURES

- Lightweight - less load on the building and easier to install.
- No additional lateral forces imposed on the building
- lateral forces neutralized in the compression tube.
- Anywhere-positioning of loft blocks along compression tube
so lift line placement is not dependent on building structural layout.
- Programmable QuickTouch® Control Panel with user- friendly LCD
readout of hoist "name," hoist function, loading profile and
operational status, preset position and current load.
- Easy limit switch adjustment with LED visible light indicators.
- Low noise operation.
- UL Listed

Certified



JOEL RIGGING ETC

GENERAL PURPOSE HOISTS



RIGHT SIDE VIEW

TECHNICAL DATA

● Model N°	WLL	CIRCUIT	LENGTH
● P650E	650lbs	Up to 48	Up to 76'
● P800G	800lbs	None	Up to 76'
● P1000E	1000lbs	Up to 48	Up to 76'
● P1300G	1300lbs	None	Up to 76'
● P1500E	1500lbs	Up to 48	Up to 76'
● P1900G	1900lbs	None	Up to 76'

Circuits for lighting equipment optional

JOEL THEATRICAL RIGGING CONTRACTORS
375 Watline Ave, Mississauga, On, L4Z 1P3
1-905-890-8802 | JOELTHEATRICAL.COM

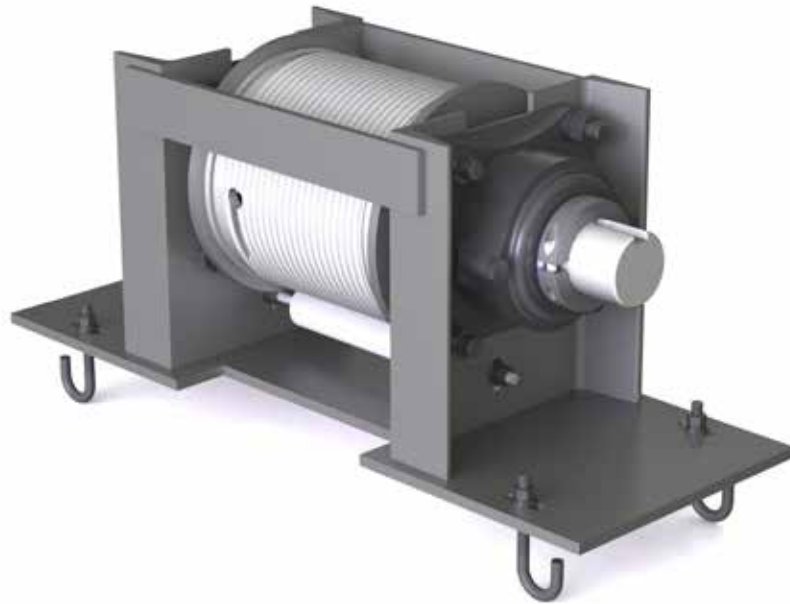


JOEL RIGGING - HELICAL DRUM BLOCK

LINE SHAFT HOIST COMPENENT

JOEL Rigging Helical Drum Blocks are designed to be incorporated into a complete line shaft hoist system.

The drum is machined to suit the cable diameter and required travel for the system, supported on flange bearings and supplied with cable retaining roller.

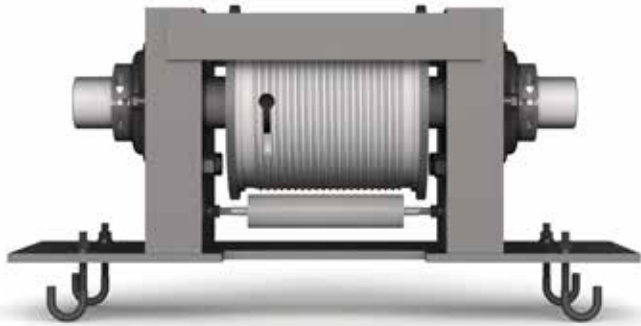


The Standard configuration comes with:

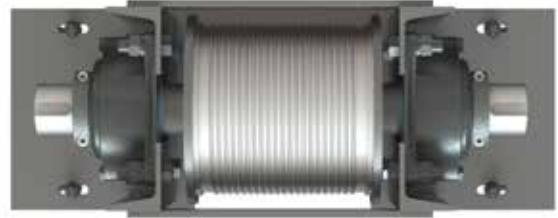
FEATURES

- Painted Black
- Available with right and left hand
- Available for 3/16" - 3/4" cable
- Can be installed upright or underhung

JOEL RIGGING - HELICAL DRUM BLOCK



FRONT VIEW



TOP VIEW



RIGHT SIDE VIEW



JOEL RIGGING

YO-YO HOIST

Motorized Hoist

JOEL Rigging's Yo-Yo hoist offers variable mounting styles, including floor, wall, or ceiling mounting.

Heavy duty and durable welded steel frame and mounting bracket, with machined plates to ensure adequate rope stacking.

These pile-on hoists include a primary brake with inherently self-locking gear box design, optional with a secondary brake that is installed on a common shaft with the drum.

Suitable for utility theatrical applications, lighting battens, drapery sets.



The Standard configuration comes with:

FEATURES

- Available in 1,200 and 2,400 lbs loading capacity
- Available with up to 10 lift lines
- Versatile operation on 208, 230, 460 or 600 VAC 3 phase power
- Average Speed 25 FPM
- 1/4" Wire Rope Size

Contact JOEL for project specific requirements

JOEL THEATRICAL RIGGING CONTRACTORS

375 Watline Ave, Mississauga, On, L4Z 1P3
1-905-890-8802 | JOELTHEATRICAL.COM



V2.1_0122



FRONT VIEW



SIDE VIEW



RAYNOK IMPERIUM

AUTOMATION CONSOLE



AUTOMATION CONSOLE

RAYNOK IMPERIUM

The Raynok Imperium Console is a powerful yet compact operator console with an integrated Windows embedded PC with Intel™ processor and an optional built in Emergency Stop Master.



The Standard configuration comes with:

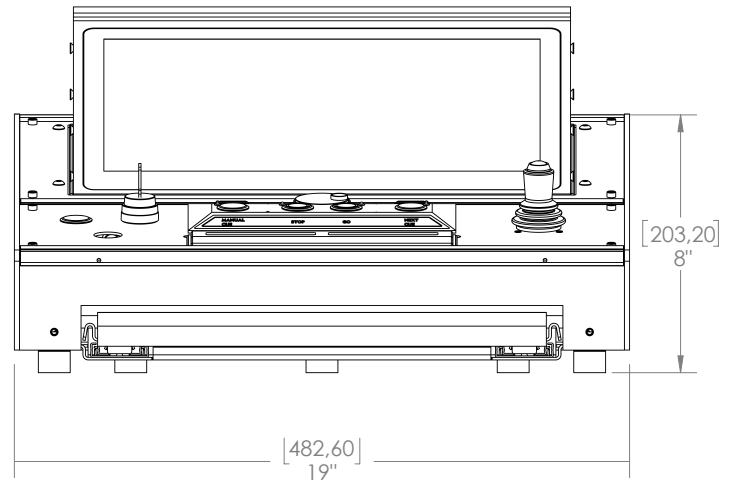
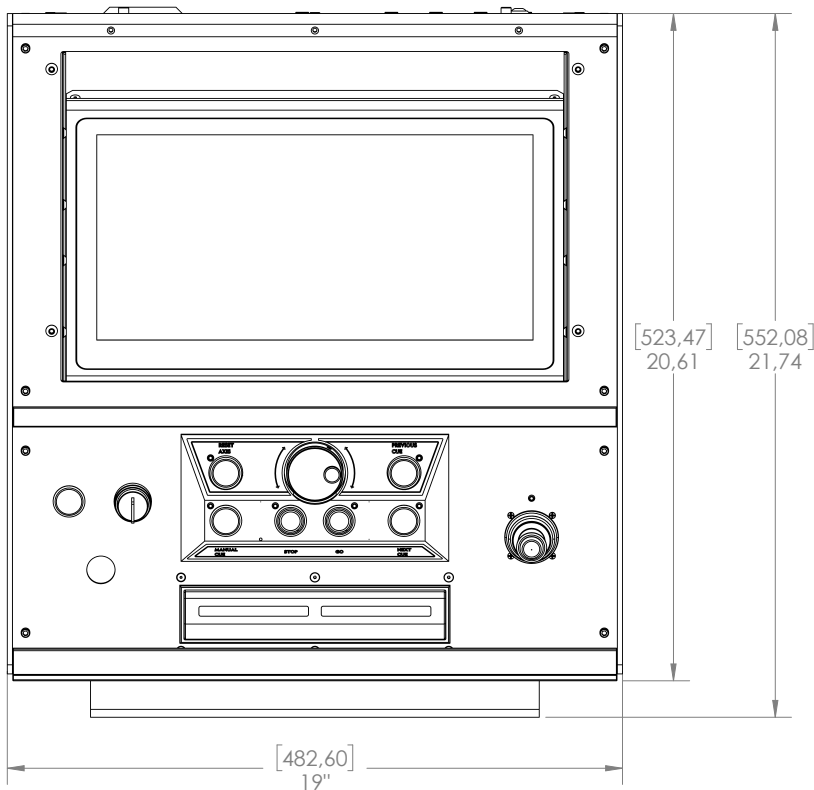
FEATURES

- **Processors:** 1 each Intel™ i7
- **Monitors:** 1 each 15" TFT capacitive touch, 2 HDMI external outputs
- **Macro buttons:** 6 dedicated / 1 speed wheel
- **Joysticks:** 1 single axis
- **Mouse:** external USB
- **Hold-To-Run:** Active at all times with status indicators
- **Emergency Stop System Controls:** Active integrated controls for ON/OFF/RESET
- **Work lights:** 1 with dimmer
- **System Alarm:** Configurable Audible
- **Keyboard tray:** Keyboard hides away when not in use
- **Included Cables:** 30' E-Stop/Data Cable, Regional power Cord
- **USB Ports:** 2 external
- **Network Ports:** 2 each for NETA & B
- **Power Source:** Universal Power Supply with isolation 90-230V 50/60Hz

for other models or more information, please visit <https://www.raynok.com/>

AUTOMATION CONSOLE

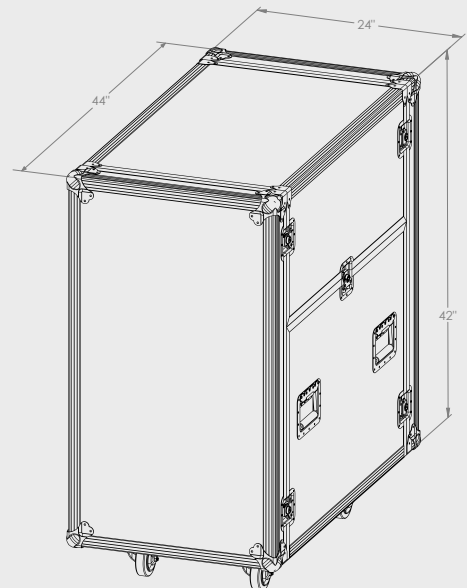
RAYNOK IMPERIUM



ACCESSORIES



flight case



JOEL THEATRICAL RIGGING CONTRACTORS
 375 Watline Ave, Mississauga, On, L4Z 1P3
 1-905-890-8802 | JOELTHEATRICAL.COM

Certified

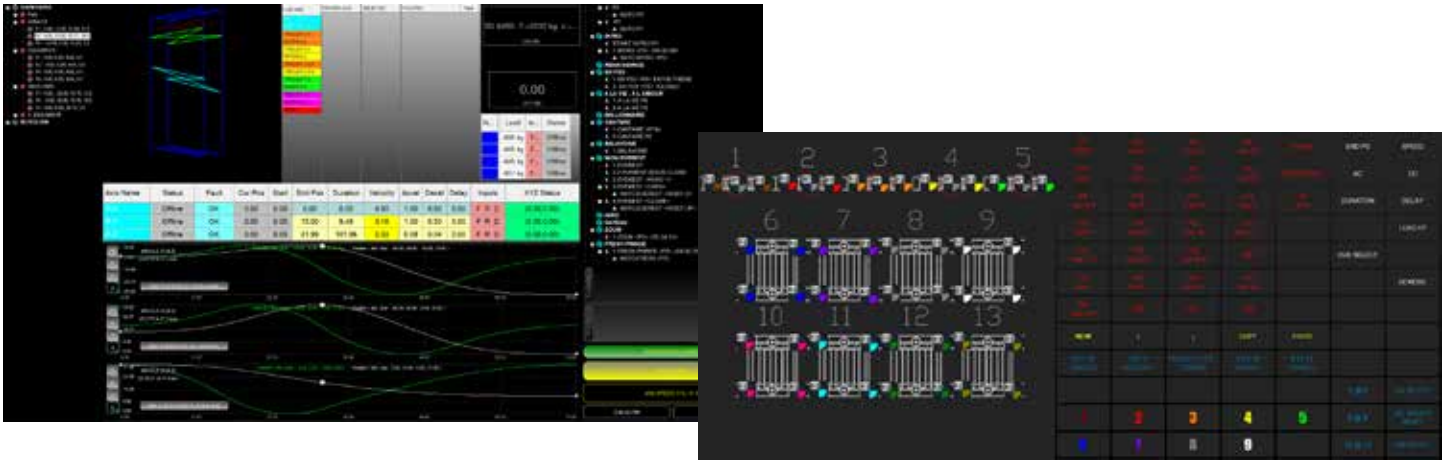


AUTOMATION CONSOLE SOFTWARE

RAYNOK IMPERIUM

The IMPERIUM runs the acclaimed Raynok Software in a compact and feature rich package.

Make it simple, customize the layout with buttons or lists, create flashing macros, access all machinery at once, or focus on a single hoist, configure constraints and interlocks to protect process... Raynok is configurable, customizable, intuitive, creative and the only software tool you'll need for controlling stage machinery. And of course Engineer The Art Of Movement for your production.



SPECIFICATIONS

Type of Software:

Control Solution for stage and entertainment related machinery.

Developer:

Niscon Inc., Burlington, Ontario, Canada

Applications:

Live Theatres, Concerts, Touring Productions, Television Studios, Circus Acts, Performer Flights, Animatronic Support, Museums, Sports Arenas, Night Clubs, Day Clubs, Kinetic Sculptures and more.

Versions / Models:

R2D for basic motion, R3D for 3D motion & Performer Flight

Largest Installation:

327 hoists, 6 consoles, 1 server, 3 interlocked E-Stop Systems.

Largest Wireless Installation:

118 hoists, 5 consoles, 1 server.

Largest number of simultaneous Performer Flights:
14 (6 single lines, 8 multiple line).

External Connections and Data Transmissions:

Transmit position data, run commands or status information via, DMX via USB interface, DMX over ArtNET, PosiStageNet or our own External Command Manager via UDP.

Common Machines Controlled:

Wire Rope Hoists, Chain Hoists, Performer Hoists, Spiralift™, Serapid™, Hydraulics, Pneumatics, Rollers (curtains), Banners, Stage Lifts, Trolleys, Cable Reels, and so much more.

Training:

1 to 2 days basic operation, 4 to 5 days Performer Flight, 1 to 2 days maintenance and support, 2 add-on days for train the trainer.

JOEL THEATRICAL RIGGING CONTRACTORS

375 Watline Ave, Mississauga, On, L4Z 1P3

1-905-890-8802 | JOELTHEATRICAL.COM

Certified



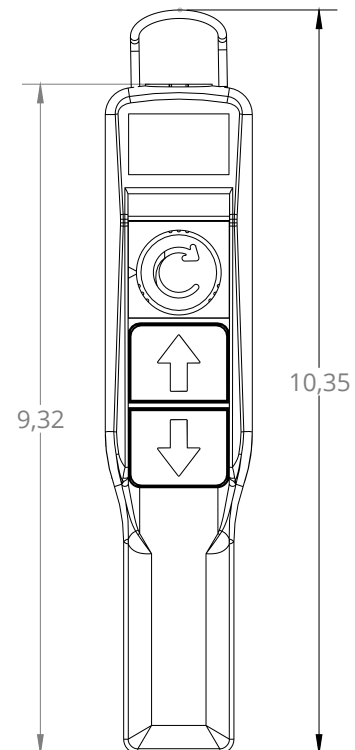
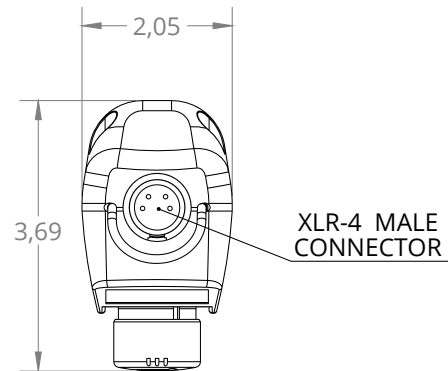
PICKLE-XLR-4

PENDANT



PENDANT PICKLE-XLR-4

The Pickle Low Voltage Pendants feature a compact, ergonomic design with the operator's comfort in mind. They are available with 1 speed button. It is equipped with internal XLR-4 connector.



The Standard configuration comes with:

FEATURES

- Integrated E-Stop Button
- 4-Pin XLR-4 Socket Output
- Rated 24V Push Buttons
- IP44 rated enclosure

Other models available. Contact us for more information.

DIMENSIONS ARE IN INCHES

JOEL THEATRICAL RIGGING CONTRACTORS
375 Watline Ave, Mississauga, On, L4Z 1P3
1-905-890-8802 | JOELTHEATRICAL.COM

Certified



TOUR RIG 500 kg

CHAIN HOIST



CHAIN HOIST

TOUR RIG 500 kg

FIXED SPEED SERIES: LOW VOLTAGE

The TOUR RIG 500 kg is the lightest and safest hoist in the industry. Standard features like contactor control, overload protection system, double brakes and hook suspension will turn your TOUR RIG 500 kg into your most essential piece of rigging equipment.

And options like direct control, external limit and one-hole suspension eye plate will give you versatility and value for your money.

The TOUR RIG 500 kg can also be configured in double reeved to reach a capacity of 1000 kg, unleashing twice the lifting capacity at half the speed. Fast and easy set-up.

The Standard configuration comes with:

FEATURES

- Speed range 16 ft/min
- Capacity 500 kg (1100 lbs) (1000 kg (2200 lbs) in double reeved format)
- Jam free plate
- Very quiet operation
- 5 pocket chain wheel for smooth operation
- Lightweight aluminium body
- Friction clutch for overload protection
- Protection IP44
- Road Case Available

Other models available. Contact us for more information.



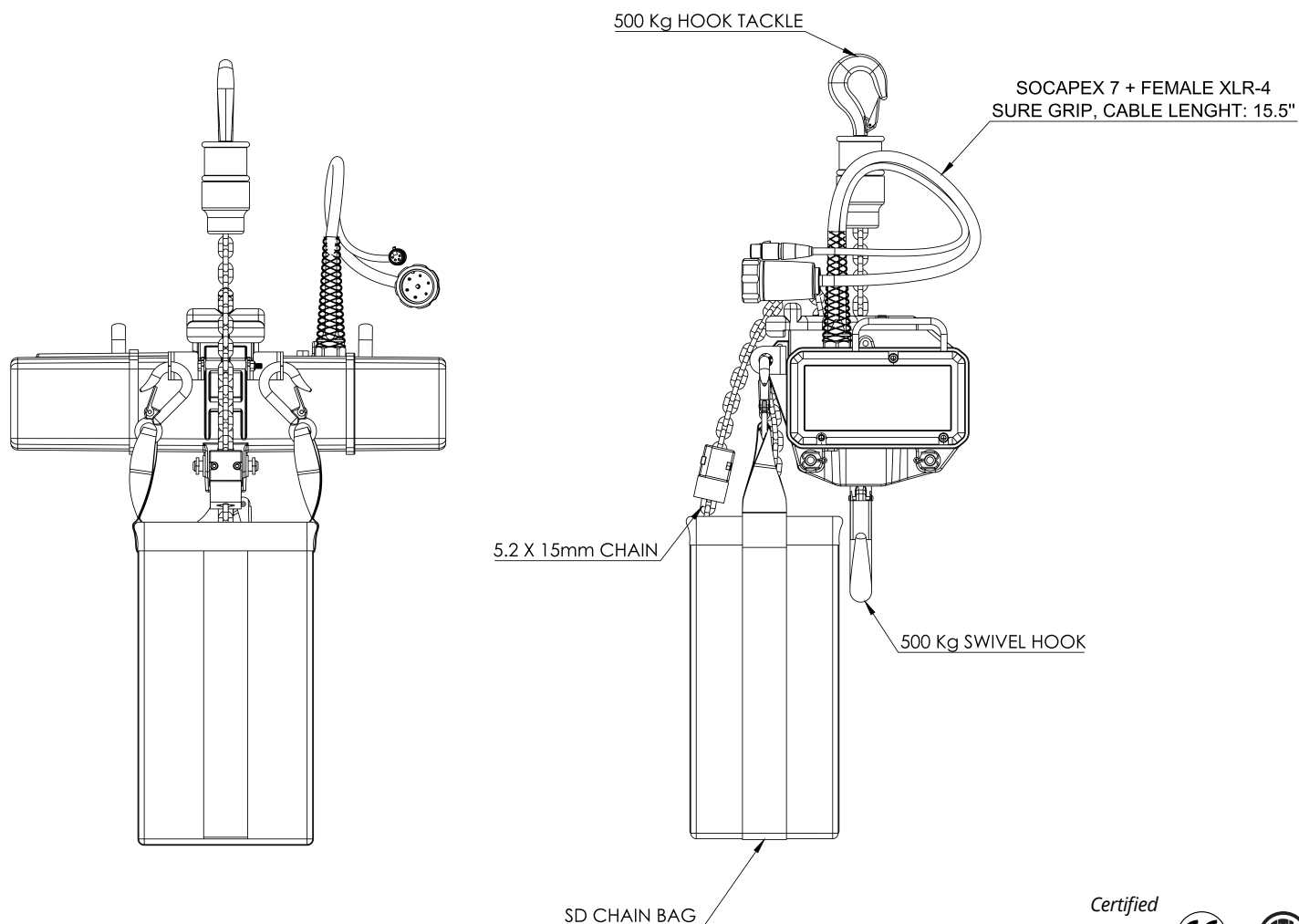
FRONT



BACK

CHAIN HOIST

TOUR RIG 500 kg



TECHNICAL DATA

● Hoist Model N°	SK030/10-LV	● Control	24V
● Max Capacity	500kg	● Motor FLA	2,3A
● Clutch Limit	700kg	● Chain Size	5,2 X 15 mm
● Hoist Position	UP/DOWN	● Chain Type	Black/Zinc
● Motor kW/HP	0,37kW	● Chain weight/ft	0.37 lbs
● Motor Voltage	208V	● Hoist Body Weight	48 lbs

Certified



Intertek



TOUR RIG 500 kg

CHAIN HOIST



CHAIN HOIST

TOUR RIG 500 kg

FIXED SPEED SERIES: DIRECT CONTROL

The TOUR RIG 500 kg is the lightest and safest hoist in the industry. Standard features like contactor control, overload protection system, double brakes and hook suspension will turn your TOUR RIG 500 kg into your most essential piece of rigging equipment.

And options like direct control, external limit positioning encoders and one-hole suspension eye plate will give you versatility and value for your money.

The TOUR RIG 500 kg can also be configured in double reeved to reach a capacity of 1000 kg, unleashing twice the lifting capacity at half the speed. Fast and easy set-up.

The Standard configuration comes with:

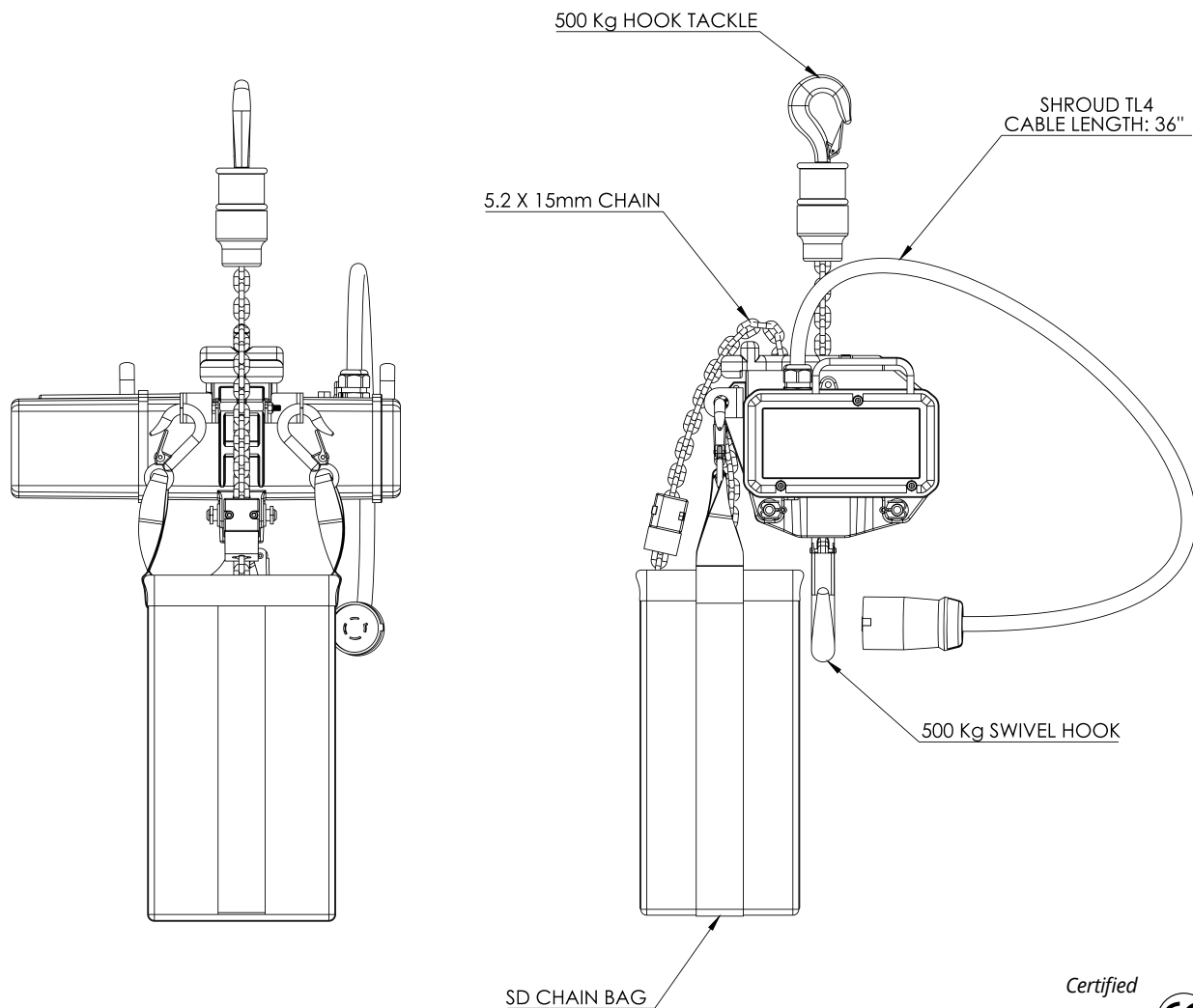
FEATURES

- Speed range 16 ft/min
- Capacity 500 kg (1 100 lbs) (1000 kg (2200 lbs) in double reeved format)
- Jam free plate
- Very quiet operation
- 5 pocket chain wheel for smooth operation
- Lightweight aluminium body
- Friction clutch for overload protection
- Protection IP44
- Road Case available



CHAIN HOIST

TOUR RIG 500 kg



Certified



Intertek

TECHNICAL DATA

● Hoist Model N°	SK030/10-DC	● Control	Direct
● Max Capacity	500kg	● Motor FLA	2,3A
● Clutch Limit	700kg	● Chain Size	5,2 X 15 mm
● Hoist Position	UP/DOWN	● Chain Type	Black/Zinc
● Motor kW/HP	0,37kW	● Chain weight/ft	0.36 lbs
● Motor Voltage	208V	● Hoist Body Weight	45 lbs

JOEL THEATRICAL RIGGING CONTRACTORS

375 Watline Ave, Mississauga, On, L4Z 1P3

1-905-890-8802 | JOELTHEATRICAL.COM



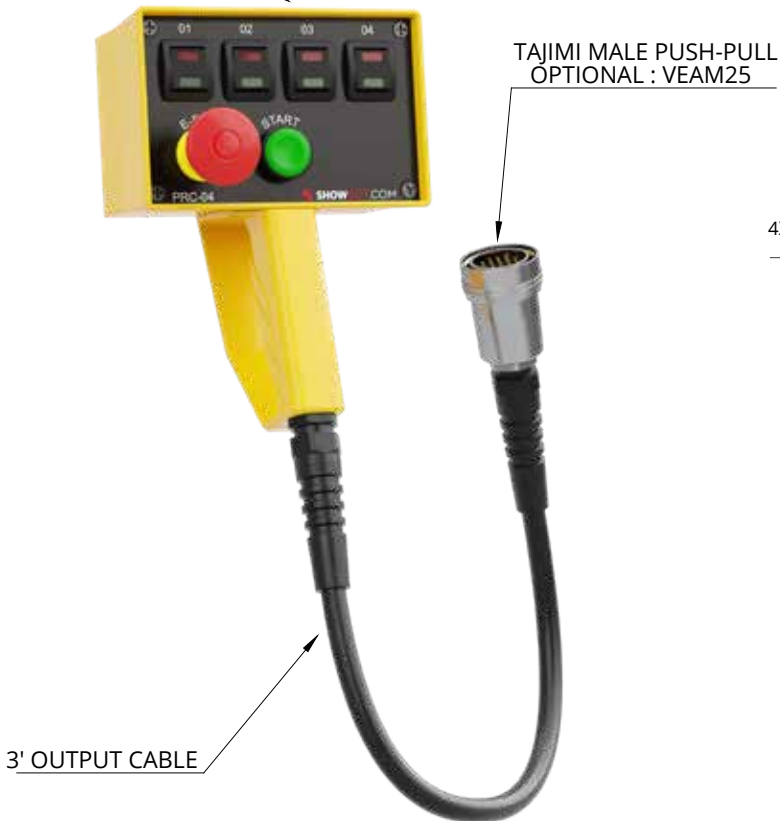
VSD-PRC-4

PENDANT



PENDANT CONTROL 4 CHANNEL VSD-PRC-4

PISTOL GRIP
ENCLOSURE

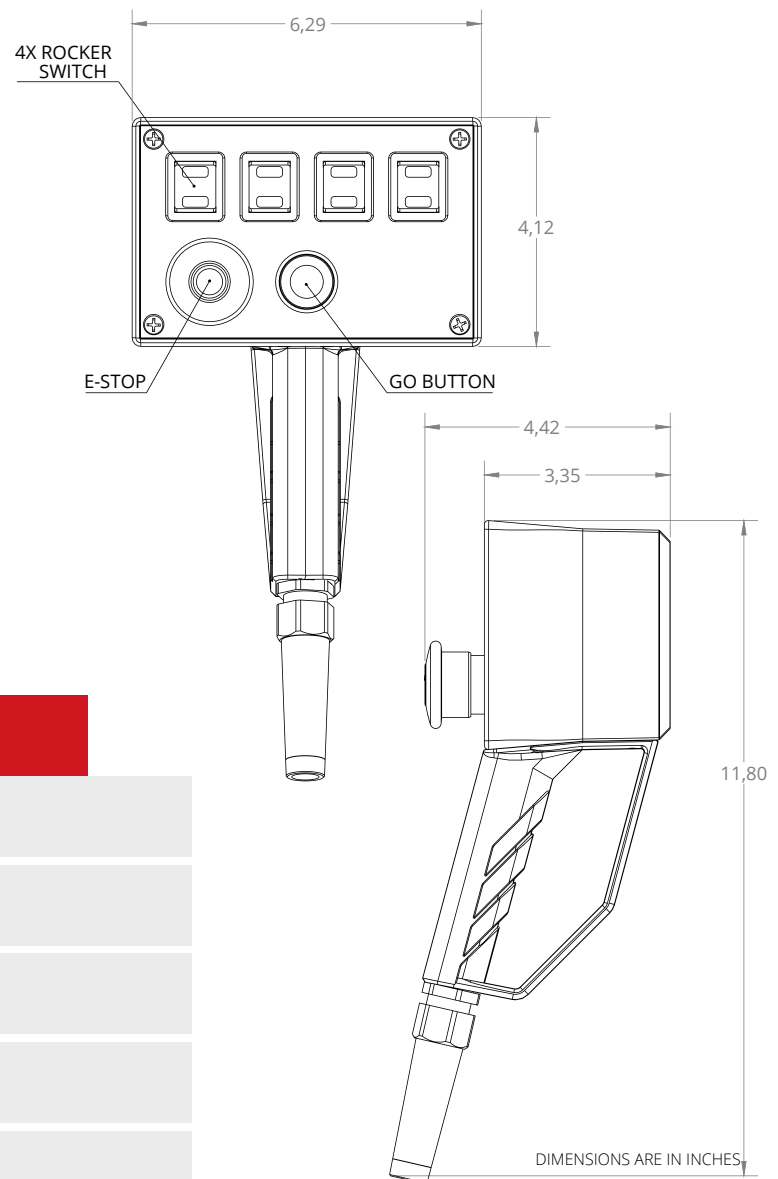


TAJIMI MALE PUSH-PULL
OPTIONAL : VEAM25

3' OUTPUT CABLE

This manual pendant can run any of our 4 Way Hoist Controllers. The pendant is supplied with an E-stop button and also an on/off key-switch as an option.

Made of a durable yellow plastic with engraved markings. The line offers hardwired cable and detached cable models. They are used in all the applications. The pendant can be supplied with Tajimi or Veam connector.



The Standard configuration comes with:

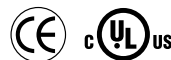
FEATURES

- Integrated E-Stop Button
- Tajimi or Veam Connector Output
- Up/Down Rocker Switch 24V Red and Green
- Go push buttons
- IP44 rated enclosure

Other models available. Contact us for more information.

JOEL THEATRICAL RIGGING CONTRACTORS
375 Watline Ave, Mississauga, On, L4Z 1P3
1-905-890-8802 | JOELTHEATRICAL.COM

Certified



TOUR RIG 1000 kg

DOUBLE BRAKES CHAIN HOIST



CHAIN HOIST

TOUR RIG 1000 kg

DOUBLE BRAKES

FIXED SPEED SERIES : LOW VOLTAGE

The TOUR RIG 1000 kg is the lightest and safest hoist in the industry. Standard features like contactor control, double brakes, overload protection system, and hook suspension will turn your TOUR RIG 1000 kg into your most essential piece of rigging equipment. And options like direct control, 4 channel gear limit switch (external or internal), positioning encoders and eye plate will give you versatility and value for your money.

The TOUR RIG 1000 kg can also be configured in double reeved to reach a capacity of 2000 kg, unleashing twice the lifting capacity at half the speed. Fast and easy set-up.

The Standard configuration comes with:

FEATURES

- Speed range 16 ft/min
- Capacity 1000 kg (2200 lbs) D8 Standard (2000 kg (4400 lbs) in Double Reeved format)
- Jam free plate
- Very quiet operation
- 5 pocket chain wheel for smooth operation
- Lightweight aluminium body
- Friction clutch for overload protection
- Protection IP44
- Road case available

Other models available. Contact us for more information.



FRONT

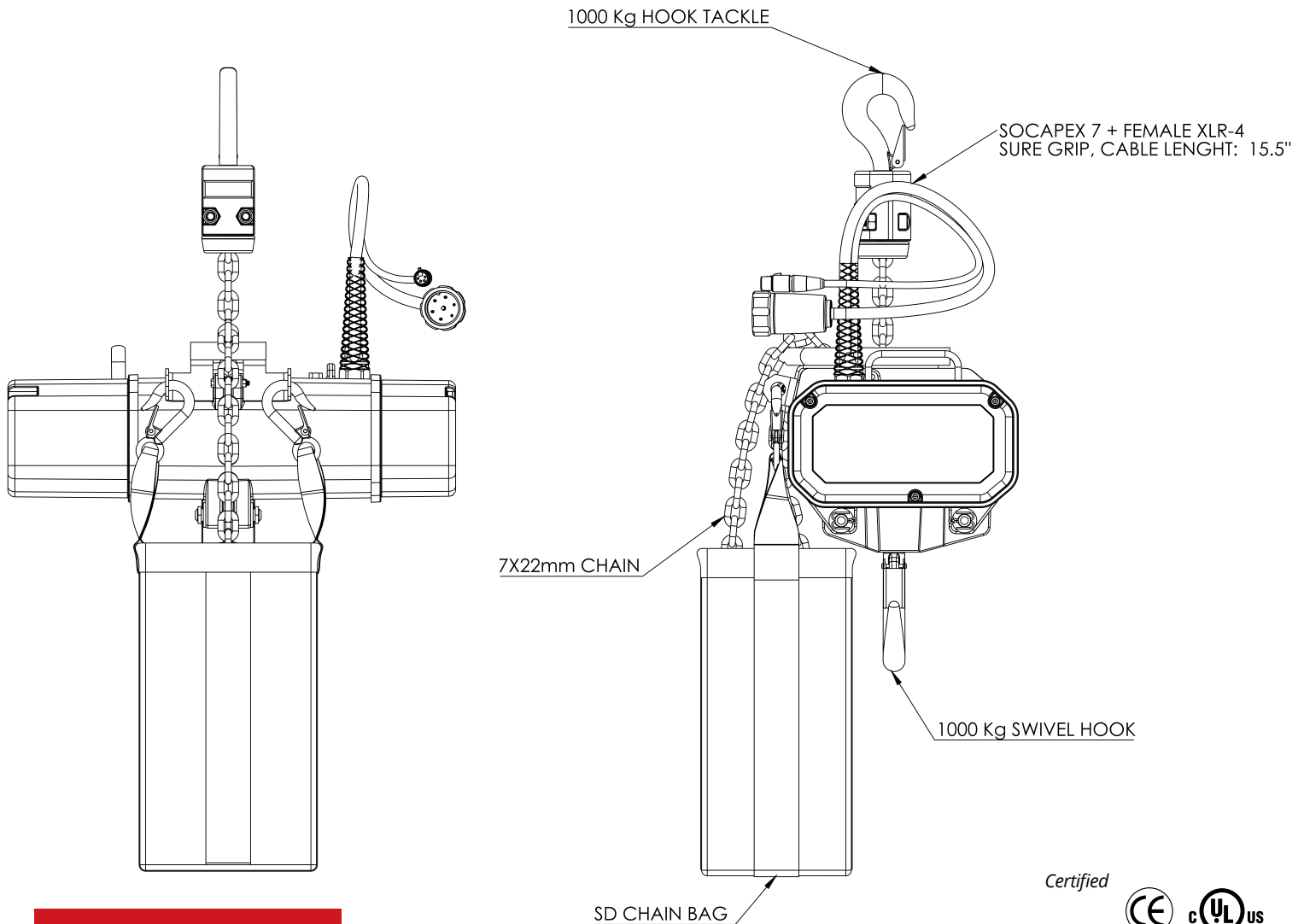


BACK

CHAIN HOIST

TOUR RIG 1000 kg

DOUBLE BRAKES



TECHNICAL DATA

● Hoist Model N°	SB4.1/12J-LV	● Control	24V
● Max Capacity	1000kg	● Motor FLA	5,6A
● Clutch Limit	1400kg	● Chain Size	7 X 22 mm
● Hoist Position	UP/DOWN	● Chain Type	Black/Zinc
● Motor kW/HP	0,75W	● Chain weight/ft	0.74 lbs
● Motor Voltage	208V	● Hoist Body Weight	71 lbs



TOUR RIG 1000 kg

DOUBLE BRAKES CHAIN HOIST



CHAIN HOIST

TOUR RIG 1000 kg

DOUBLE BRAKES

FIXED SPEED SERIES: DIRECT CONTROL

The TOUR RIG 1000 kg is the lightest and safest hoist in the industry. Standard features like contactor control, double brakes, overload protection system, and hook suspension will turn your TOUR RIG 1000 kg into your most essential piece of rigging equipment. And options like direct control, 4 channel gear limit switch (external or internal), positioning encoders and eye plate will give you versatility and value for your money.

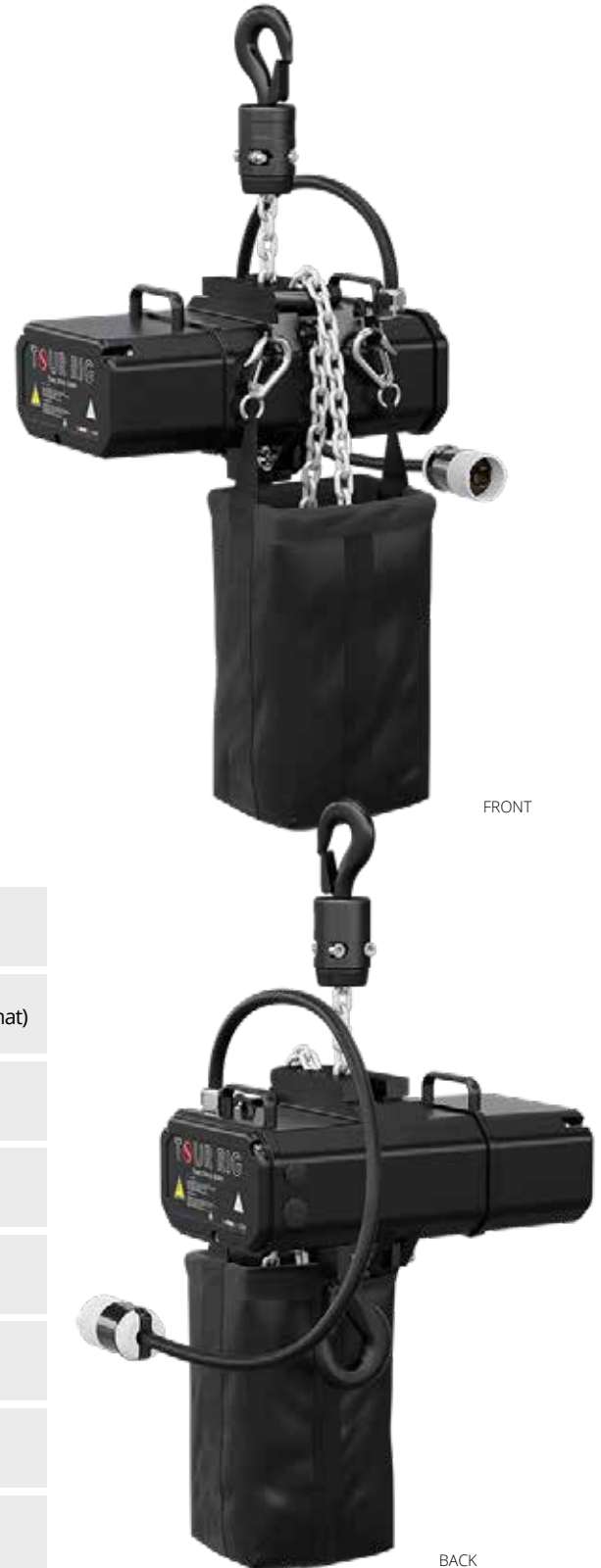
The TOUR RIG 1000 kg can also be configured in double reeved to reach a capacity of 2000 kg, unleashing twice the lifting capacity at half the speed. Fast and easy set-up.

The Standard configuration comes with:

FEATURES

- Speed range 16 ft/min
- Capacity 1000 kg (2200 lbs) D8 Standard (2000 kg (4400 lbs) in Double Reeved format)
- Jam free plate
- Very quiet operation
- 5 pocket chain wheel for smooth operation
- Lightweight aluminium body
- Friction clutch for overload protection
- Protection IP44
- Road Case Available

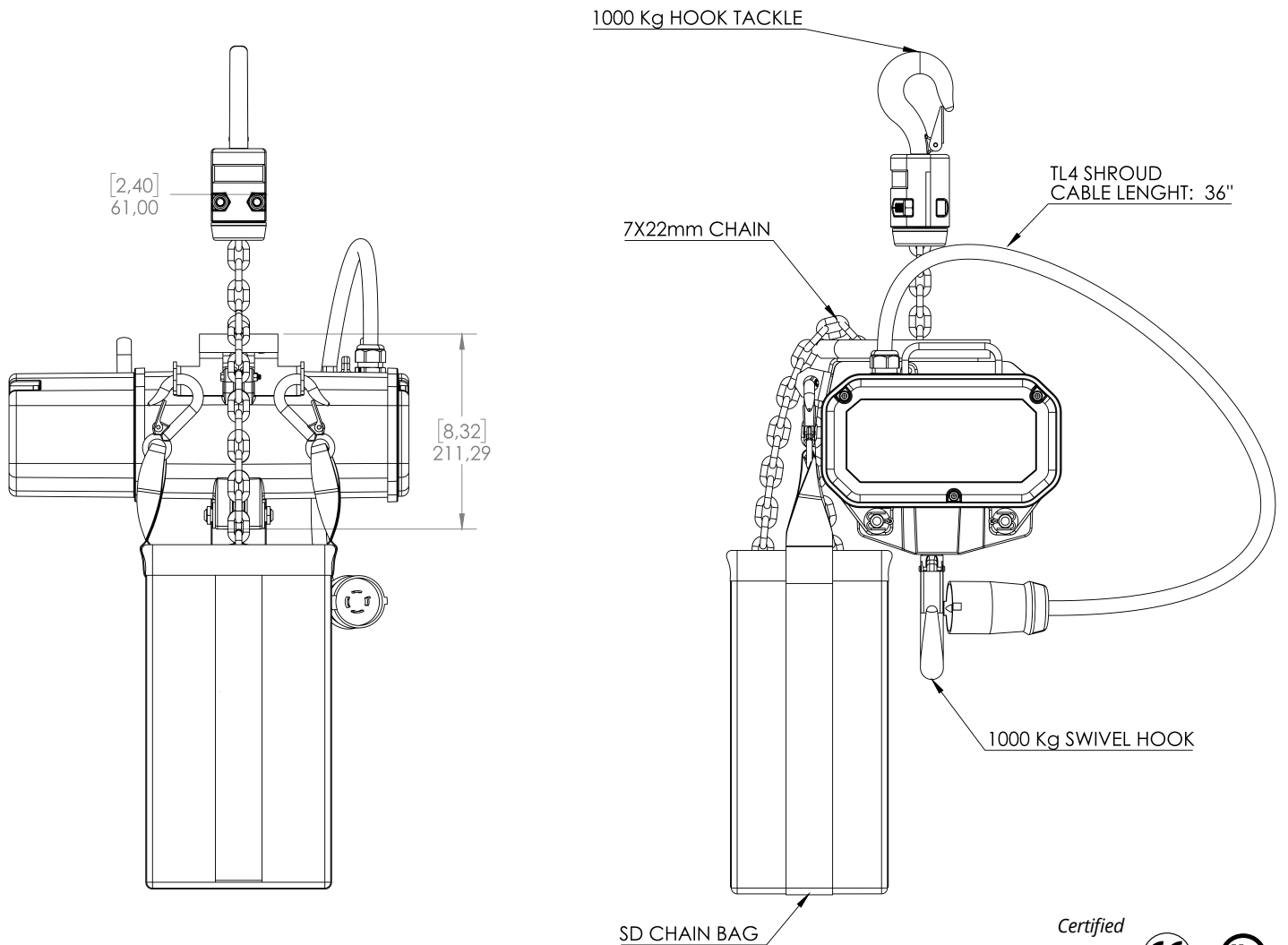
Other models available. Contact us for more information.



CHAIN HOIST

TOUR RIG 1000 kg

DOUBLE BRAKES



Certified



TECHNICAL DATA

● Hoist Model N°	SB4.1/12J-DC	● Control	Direct
● Max Capacity	1000kg	● Motor FLA	5,6A
● Clutch Limit	1400kg	● Chain Size	7 X 22 mm
● Hoist Position	UP/DOWN	● Chain Type	Black/Zinc
● Motor kW/HP	0,75W	● Chain weight/ft	0.74 lbs
● Motor Voltage	208V	● Hoist Body Weight	67 lbs



SD-400/WCS-APR

HOIST CONTROLLER



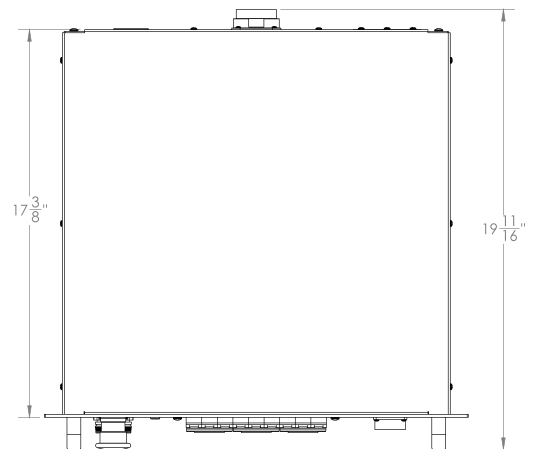
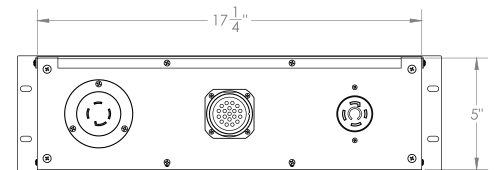
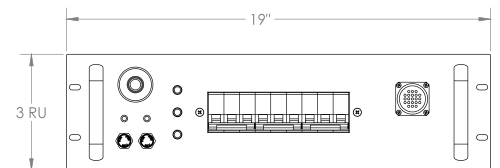
HOIST CONTROLLER

SD-400/WCS-APR

DIRECT CONTROL SOCAPEX 19-Pin

This 4 channel Rigging Controller is made for Direct Control chain hoists. It features one Socapex 19-Pin female panel mount connector and comes with automatic phase reverse as a standard feature.

When the main supply is connected, there is no need to worry about switching over to the proper lifting direction. This controller can be used with a VSD-DIS-30 disconnect as a main power distribution.



DIMENSIONS ARE IN INCHES

The Standard configuration comes with:

FEATURES

On Front Panel:

- Integrated E-Stop Button
- Circuit Breaker: 2 for Chain Hoist, 1 for Hot Pocket
- Pendant Input Connector, Tajimi 21-Pin (Veam 25-Pin as an Option)

On Back Panel:

- Power Input Connector, 120/208V 3Ph, TL4-30A - HBL-2725
- Power Output Connector, 1x Socapex, 19-Pin (Veam 25-Pin as an Option)
- Hot Pocket Connector for Direct Pickle, TL4-30A - HBL-2720
- Automatic Phase Reverse as a Standard Feature (APR)
- 3RU Rack Mount Enclosure
- **Weight: 45 Lbs**

Other models available. Contact us for more information.

JOEL THEATRICAL RIGGING CONTRACTORS
375 Watline Ave, Mississauga, On, L4Z 1P3
1-905-890-8802 | JOELTHEATRICAL.COM

Certified

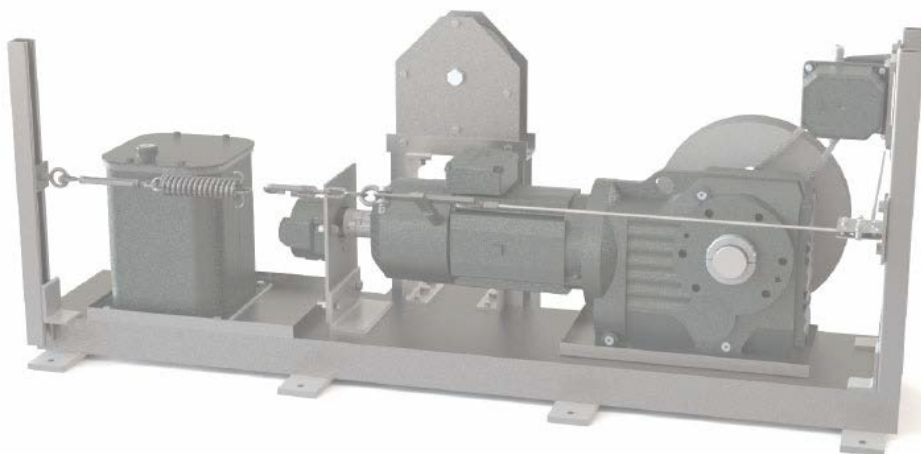


Intertek



JOEL RIGGING FIRE CURTAINS

PRODUCT CATALOG



JOEL RIGGING FIRE CURTAINS

JOEL Rigging has been providing Proscenium Fire Safety Curtains and Heat Borders to the theater industry for decades with unmatched quality and quality control throughout every step of the process. Fire Curtains and Heat Borders are available in Tan or Black.

A Proscenium Fire Safety Curtains is installed in a theater for the purpose of protecting the audiences from a fire on stage. These curtains are made of non-combustible materials (see ASTM E 136), and meet or exceed all applicable fire and safety codes.

The curtains contain NO ASBESTOS.



JOEL RIGGING fire curtains meet or exceed the following:

CODES

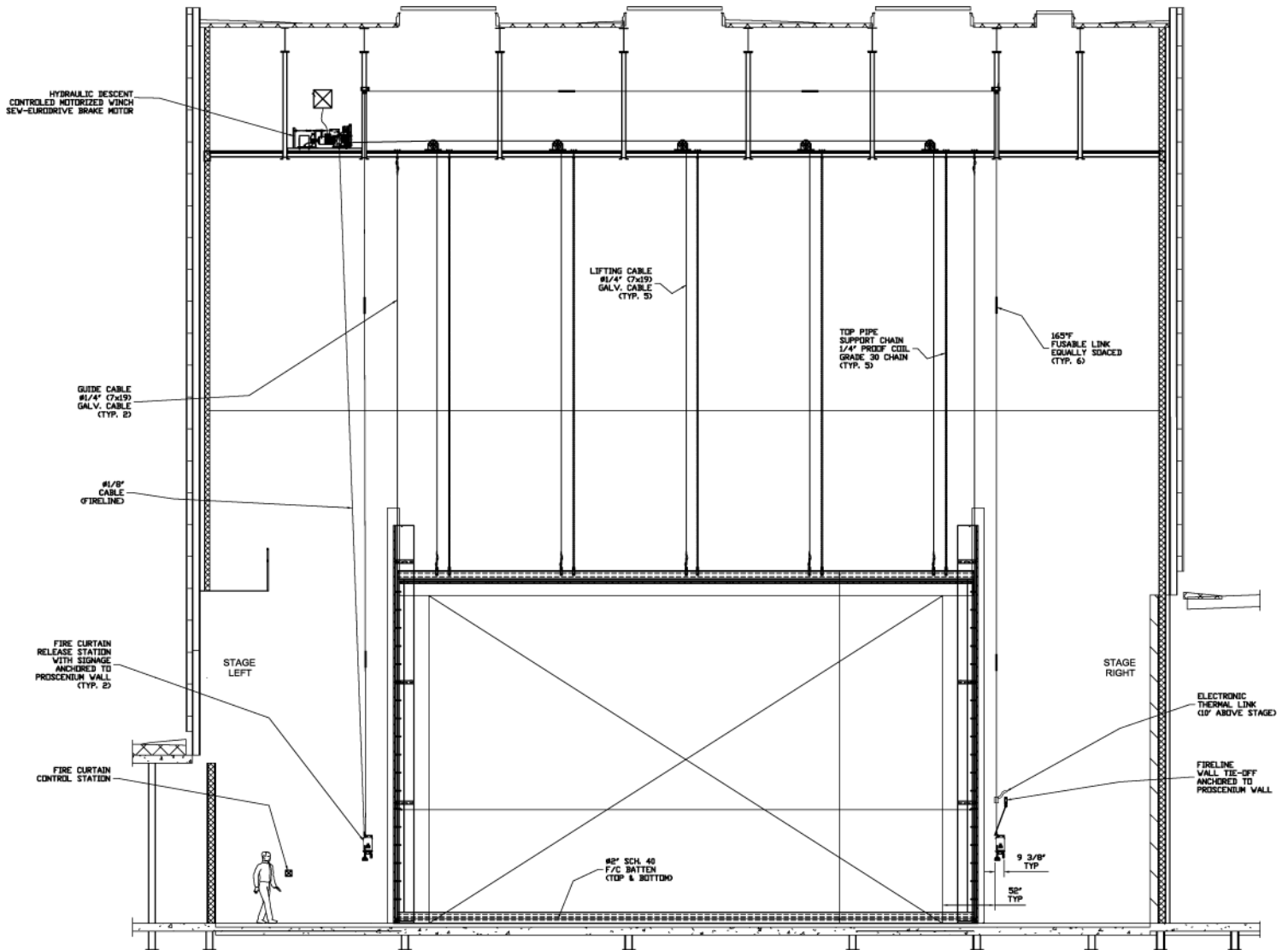
- IBC (International Building Code-2006)
- NFPA Life Safety Code 101 (2009)
- NFPA 5000 Building Construction and Safety Code (2009)
- NFPA 80 Standard for Doors and Other Opening Protectives (2010)
- ANSI E1.22 Entertainment Technology - Fire Curtain Systems (2009) -- Except 3.3.2
- MEA # 217-00-M (City of New York, Dept. of Buildings)
- 1997 & Earlier (UBC, SBCCI, BOCA)



CENTER IN THE SQUARE -KITCHENER



JOEL RIGGING FIRE CURTAINS



ELEVATION: (TYPICAL: CUSTOM FABRICATED ACCORDING TO PROJECT REQUIREMENTS)

JOEL THEATRICAL RIGGING CONTRACTORS
375 Watline Ave, Mississauga, On, L4Z 1P3
1-905-890-8802 | JOELTHEATRICAL.COM



V2.1_0122



JOEL RIGGING

FIRE CURTAIN MOTOR

Motorized Fire Curtain Hoist with Descent Control

JOEL Rigging's Fire Curtain Motor offers hydraulic regulated speed ascent and descent of a fire curtain with a maximum weight of 1,100 lb (499 kg).

Standard Travel 30', more available upon request. Complete with control system, with Keyed operator station. Versatile operation on 208, 230, 460 and 600 VAC 3 Phase Line voltages.

Speed of descent in the event of an emergency is controlled by a hydraulic speed regulator. Requires a complete Fire Curtain Release Line system to operate correctly.

JOEL Rigging's fire curtain motor is designed to support a continuous load between 500 lb (227 kg) and 1,100 lb (499 kg).

Due to the physical characteristics associated with Brail Fire Curtains, additional pipe weight may be required in order to achieve proper operation.



Contact JOEL for project specific requirements

JOEL THEATRICAL RIGGING CONTRACTORS

375 Watline Ave, Mississauga, On, L4Z 1P3

1-905-890-8802 | JOELTHEATRICAL.COM



JOEL RIGGING

ELECTRONIC FIRE CURTAIN RELEASE STATION

JOEL Rigging EFCR22 provides an interconnection between the Fire Curtain and the building fire alarm system. This will allow the fire alarm to trigger the descent of the fire curtain in the event of an alarm condition.

When signalled by the fire alarm system the EFCR22 will release the fire line and permit the curtain to descend via gravity to close off the proscenium opening. The EFCR22 operates in parallel with the normal fire curtain release stations and fusible links to provide complete protection.

Unit is complete with battery backup, allowing operation during a power failure.

The EFCR22 is resettable, operating in place of the industry standard single use ETL devices.



The Standard configuration comes with:

FEATURES

- Resettable
- Manual Release button
- 2 Hour Battery Back up

JOEL THEATRICAL RIGGING CONTRACTORS

375 Watline Ave, Mississauga, On, L4Z 1P3

1-905-890-8802 | JOELTHEATRICAL.COM



Certified
cULUS

BY SHOWSDT

JOEL RIGGING EMERGENCY RELEASE SYSTEM

Manual Fire Curtain Release Mechanism

JOEL Rigging Fire Curtain Release mechanism, maintains tension in the fire release system. In the event of an emergency, manually releasing the device will cause the fire curtain to close automatically. This is to be installed as part of a complete Fire Curtain system. Can you installed on manual and motorized fire curtains, in line with the Fire Alarm connection and fusible links to provide 3 layers of protection.

System is manually resetable by the operator and no special training is required.



The Standard configuration comes with:

FEATURES

- Push the red handle to the left to release
- Pull down on the black handle to reset
- Wall mounted



JOEL THEATRICAL RIGGING CONTRACTORS

375 Watline Ave, Mississauga, On, L4Z 1P3

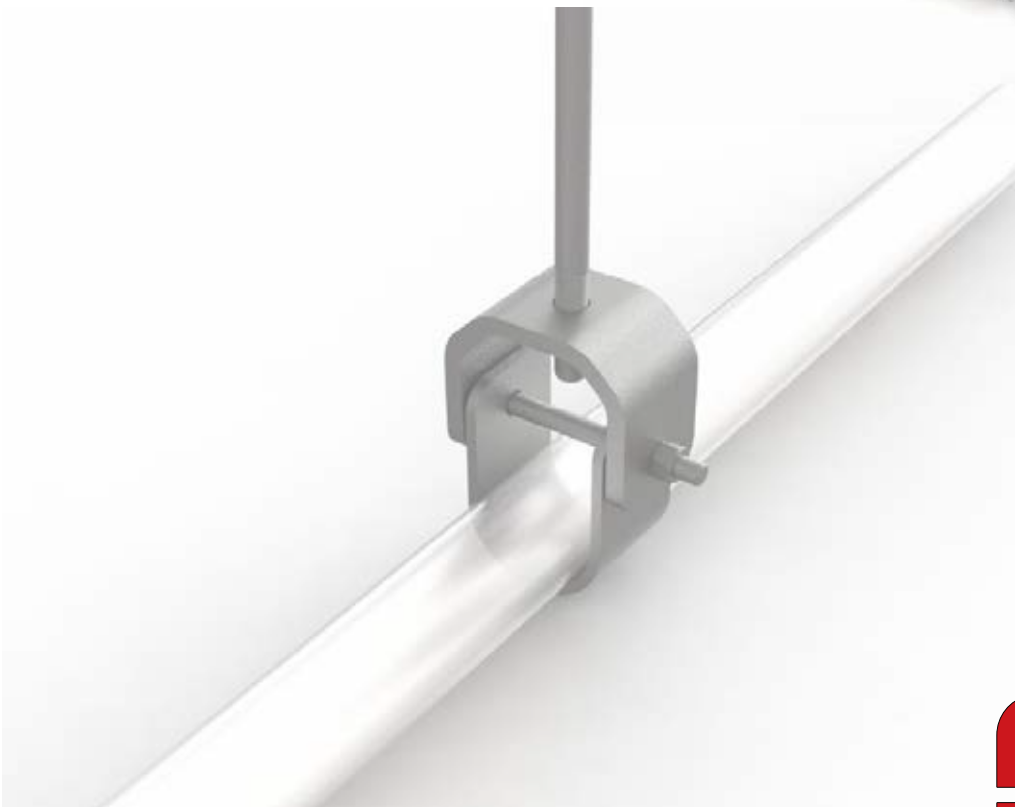
1-905-890-8802 | JOELTHEATRICAL.COM



JOEL RIGGING

PIPE & TENSION GRIDS

PRODUCT CATALOG



JOEL RIGGING PIPE GRID

PIPE GRID / STATIC RIGGING

JOEL Rigging dead hang rigging componets and systems are ideal for pipe grids, drapery battens, lighting battens. Loads can be supported with chain or cable slings, which connect with shackles and JOEL Rigging pipe clamps.



The Standard configuration comes with:

FEATURES

- Black
- Available for all beam sizes
- SWL upto 1 ton per point
- Available with chain or cable slings.

JOEL RIGGING PIPE GRID



FRONT VIEW



RIGHT SIDE VIEW



JOEL RIGGING TENSION GRID

TENSION WIRE GRID / WIRE WAY GRID

A tension grid is used to create a working surface above an open area, designed to provide access to equipment without the risks associated with working at heights.

The grid surface permits free movement of workers, while eliminating all falling hazards.

In theatrical settings, this permits flexible lighting and audio installations that would normally be extremely difficult with traditional catwalk systems. The woven surface is effectively transparent to lighting and audio.

In commercial settings, these systems provide access above mall atriums, foyers, casinos without having to use machinery or interrupt activities below.

JOEL Rigging designs and manufactures tension grids in both Modular and Clear Span designs, to your project specific requirements.



IMAGES ABOVE: SEMI CIRCULAR CLEAR SPAN TENSION GRID

The Standard configuration comes with:

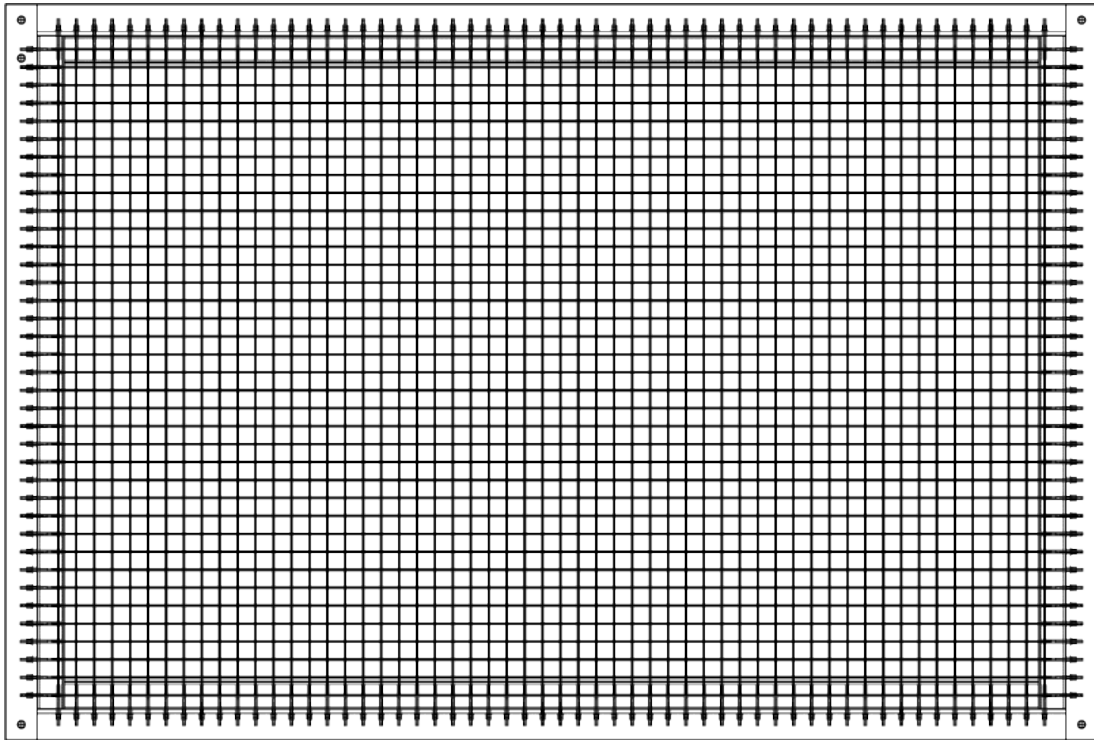
FEATURES

- 1/8" Cables, weaved on 2" centres
- 20 lbs/square foot load capacity
- Frame painted black
- Black cable available
- Site repairs can be completed with a crimping tool
- Higher load capacity available upon request

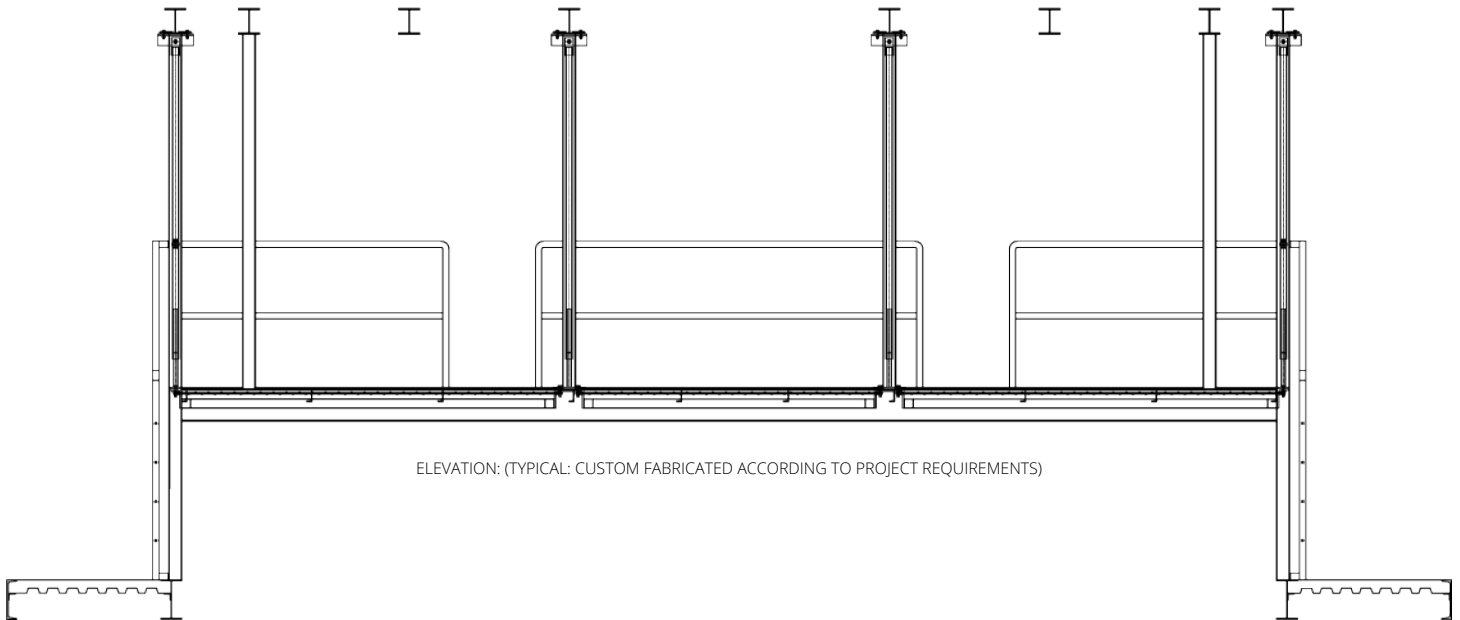


JOEL RIGGING TENSION GRID

PLAN VIEW



SIDE VIEW



ELEVATION: (TYPICAL: CUSTOM FABRICATED ACCORDING TO PROJECT REQUIREMENTS)

JOEL THEATRICAL RIGGING CONTRACTORS
375 Watline Ave, Mississauga, On, L4Z 1P3
1-905-890-8802 | JOELTHEATRICAL.COM



JOEL RIGGING - MEGA GRID LOCK

The Mega-Gridlock is designed for permanent installations in studios and theaters. It joins 2 overlapping pipes together in a 90 degree joint. The side grooves act as a wrench, keeping the nut from turning during installation.

Fastens any combination of 1-1/2" pipe (1.9" OD), 1-1/4" pipe (1.66" OD), and 2" OD Tube. (Tight fit on 2" OD tube)



The Standard configuration comes with:

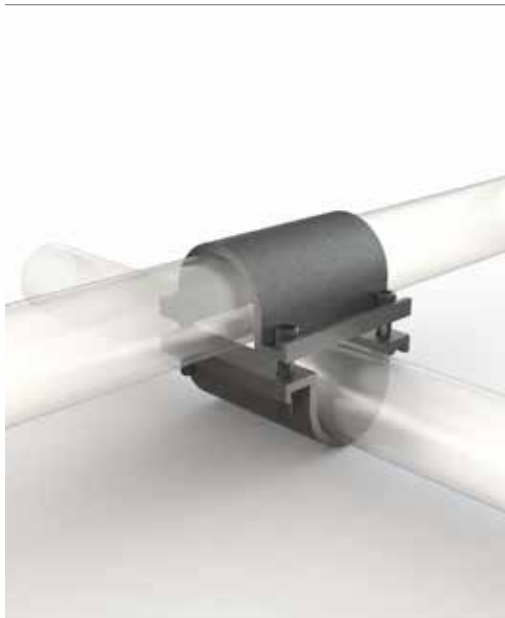
FEATURES

- Minimum Size: 1.25" pipe, (1.66" OD)
- Maximum Size: 1.5" pipe, (1.90" OD), 2" OD tube
- Working Load Limit: 1250 lbs 568kg
- Dimensions: 3.65" x 3.65" x 4.375" tall max
- Weight: 1.03 lbs

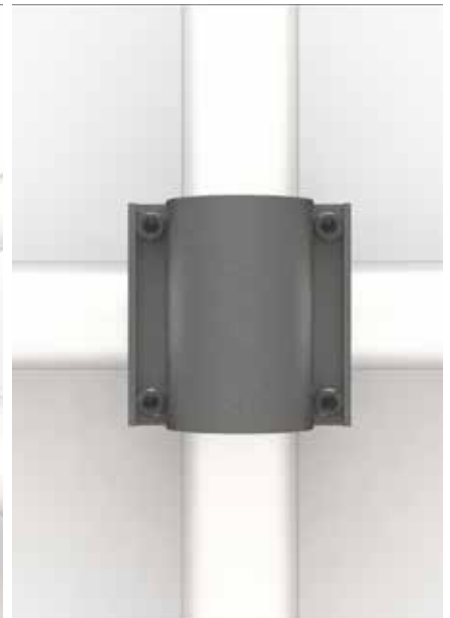
JOEL RIGGING - MEGA GRID LOCK



FRONT VIEW



SIDE VIEW



TOP VIEW

TECHNICAL DATA

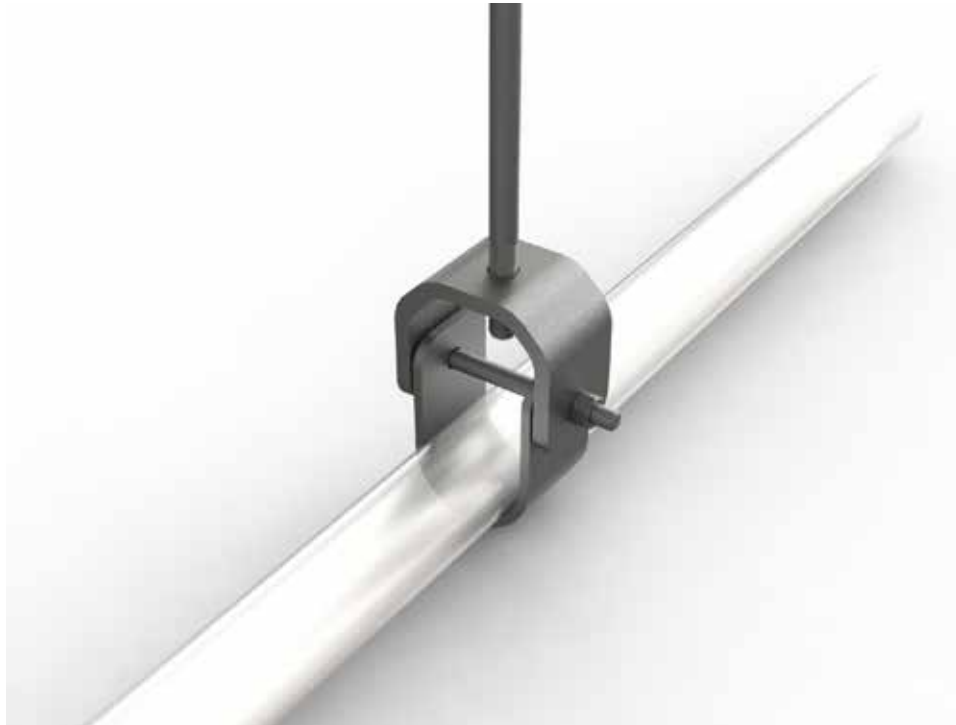
● Model N°	
● MGM Mega-Gridlock	Silver
● MGB Mega-Gridlock	Black Anodized
● MGMSS Mega-Gridlock	Stainless Steel Hardware, Silver
● MGW Mega-Gridlock	White Powder Coat



JOEL RIGGING HD CLEVIS HANGER

HEAVY DUTY CLEVIS HANGER

JOEL Rigging Clevis Hangers offer the ideal solution for supporting pipe grids, FOH Lighting pipes, German/tab set pipes. Constructed to our exacting standards and exceeding load capacities available from other markets.



The Standard configuration comes with:

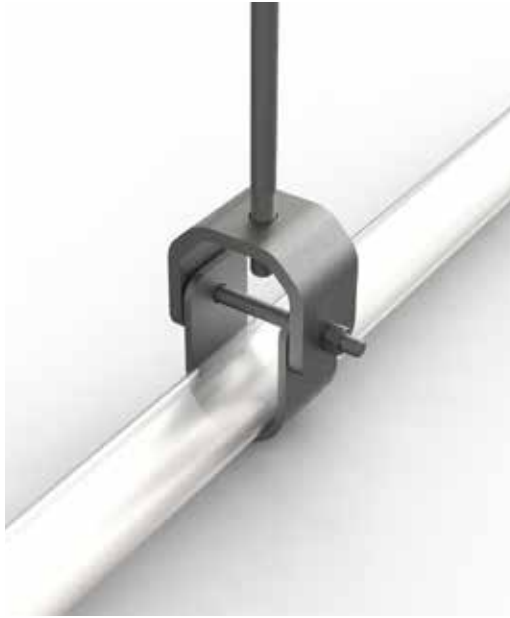
FEATURES

- Painted Black
- Load Capacity of 500 lbs each
- 1 1/2" Standard pipe Size

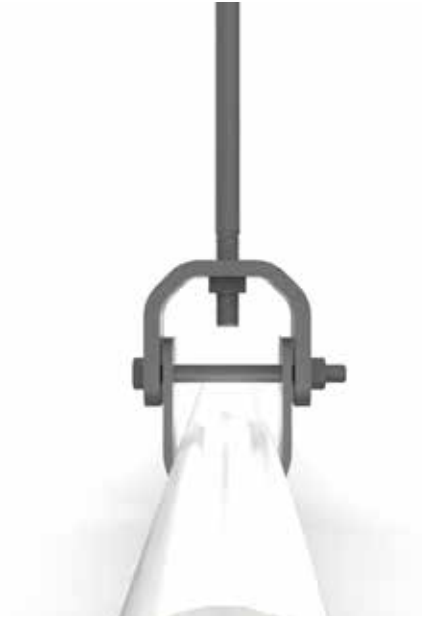
Available options:

- 3/8" and 1/2" Threaded Rods
- 2" Standard pipe Size

JOEL RIGGING HD CLEVIS HANGER



SIDE VIEW



FRONT VIEW



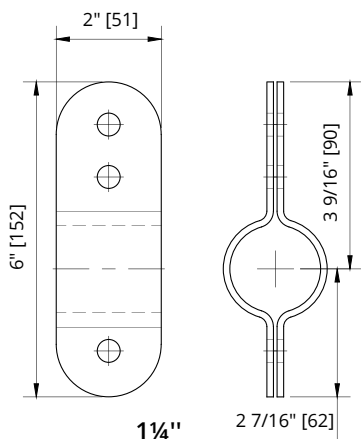
JOEL RIGGING PIPE CLAMP

JOEL Pipe Clamps provide a secure connection to a pipe batten, fully encircling the batten to prevent the connection from sliding.

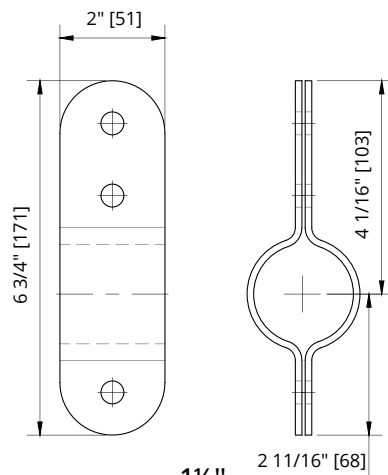
Used for counterweight, dead hang rigging, pipe girds, fire curtains and scenery suspension.

FEATURES

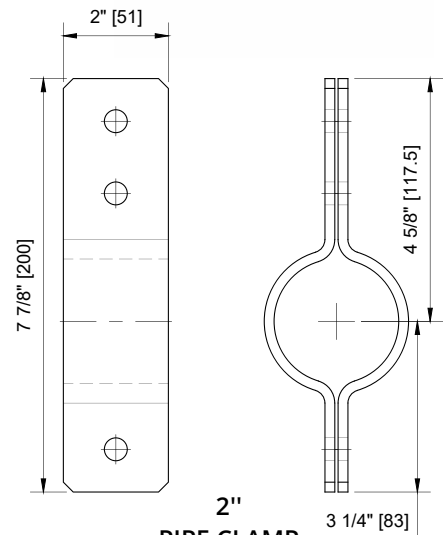
- Steel clamps with black finish
- Full clamps have rounded corners
- Supplied with 3/8" x 1 1/4" grade 5 bolts, lock washers and nuts and a 7/16" hole to connect a shackle.
- Pipe clamps are 12 gauge steel



1 1/4"
PIPE CLAMP



1 1/2"
PIPE CLAMP



2"
PIPE CLAMP

TECHNICAL DATA

Model N°	Description	SWL*	Weight
• 2814-J	1.25" (31.75 mm) Joel pipe clamp	750 lbs (340 kg)	1 lb (0.45 kg)
• 2815-J	1.5" (38.1 mm) Joel pipe clamp	750 lbs (340 kg)	1 lb (0.45 kg)
• 2816-J	2" (50.8 mm) Joel pipe clamp	750 lbs (340 kg)	1 lb (0.45 kg)

*SWL: maximum load that can be applied to the pipe clamp which is in "like new" condition and has been properly installed, maintained, and operated.

JOEL THEATRICAL RIGGING CONTRACTORS
375 Watline Ave, Mississauga, On, L4Z 1P3
1-905-890-8802 | JOELTHEATRICAL.COM



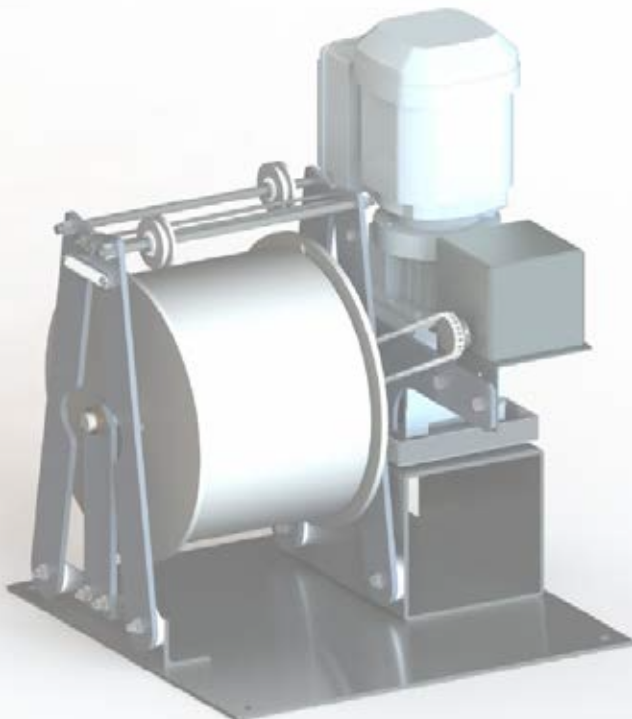
V2.1_0122



JOEL RIGGING

CURTAINS & TRACKS

PRODUCT CATALOG



JOEL RIGGING - SHOWSDT

CURTAINS

SHOWSDT has been manufacturing stage curtains for over 20 years. Our sewing workshop allows us to make custom curtains to your specifications with quick delivery and a guarantee of quality.

SHOWSDT has more than 200 varieties of fabrics in inventory and can offer you hundreds of other models, flame retardant or not.

COMPLETE STAGE DRESSING

- Drapes and stage curtains
- Legs and borders
- Stage skirts
- Cycloramas
- Backdrops
- Traveler curtains
- Masking for trusses
- Show LED curtains
- Projection screens
- Speaker covers

Expertly crafted, flawlessly installed

Our sewing and installation services work hand in hand to ensure that your curtains meet your exact specifications. Our experts are qualified to take precise measurements so that your curtains are installed perfectly. We pay the same attention to detail and work with the same professionalism whether it is a large theater or a smaller event.



Project: National Art Center in Ottawa



JOEL RIGGING - SHOWSDT

CURTAINS



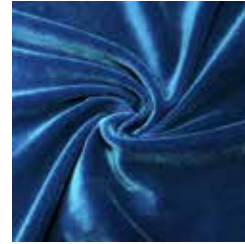
black



Volcano Grey



Navy Blue



Dante Sapphire Blue



Emerald Green

FABRICS IN STOCK

- Cotton and synthetic velour IFR - FR
- Blackout Satin IFR
- Cotton muslin and canvas duck
- Felt & Fleeces
- Metallic Chiffon
- Scrims & Opera nets
- Synthetic fabrics
- Stretch fabrics
- Projection fabrics
- Lamé & special scenic fabrics

Other colours, textiles and finishes available.
Please contact us for additional information.

Accessories

SHOWSDT is without a doubt the ultimate one-stop-shop for all your stage dressing needs. We offer a host of accessories to allow you to install or enhance your stage curtains: tiebacks, cloth ties and sash cord, velcro, truss covers, curtain chains and clips and more.

JOEL THEATRICAL RIGGING CONTRACTORS

375 Watline Ave, Mississauga, On, L4Z 1P3
1-905-890-8802 | JOELTHEATRICAL.COM



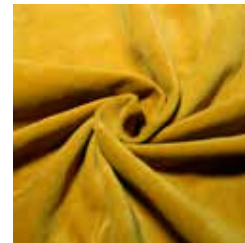
V2.1_0122



Red 007



Burgundy



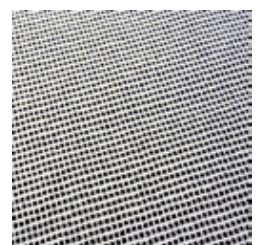
Gold



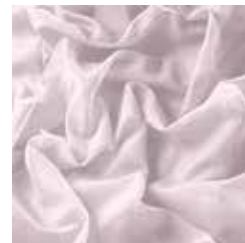
Cyclorama



Black Scrim



White Scrim



Sheer Voilage



Metallic fabrics



JOEL RIGGING

ADC

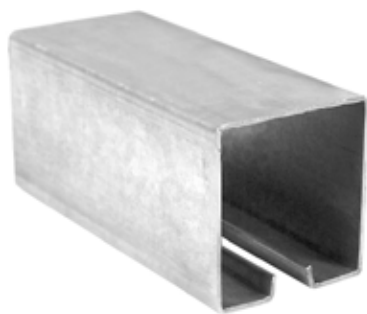
TRACKS, CARRIERS AND ACCESSORIES



JOEL RIGGING is an authorised stocking dealer of ADC tracks, carriers and all other accessories. Other models are available.

JOEL RIGGING stocks a wide selection of track components and our trained team can also provide installation services if required.

Contact us today for all of your track and curtain needs.



2800 (AL) TRACK CHANNEL

Aluminum extrusion. Obtainable in unspliced lengths up to 24'

2800-AL is constructed from 12-gauge aluminum. Holes can be drilled along the top of the track channel for direct ceiling attachment. Suspended tracks require Model 2808 hanging clamps for mounting.

Size Approximately: 2-5/8" wide x 2-3/4" high.

Weight: 2800AL Channel 1' - 15 oz.



1700 (AL) TRACK CHANNEL

Aluminum extrusion. Obtainable in unspliced lengths up to 26'

1700-AL supplied in 12-gauge aluminum. Holes can be drilled for direct ceiling attachment.

Size Approximately: 1-3/4" wide x 2" high.

Weight: 1700AL Aluminum Track 1' - 9 oz.



1400 (AL) CHANNEL

Aluminum extrusion. Obtainable in unspliced lengths up to 20'

11-gauge extruded aluminum, mill-finish. May be curved on the job to recommended minimum radius of 2' (layout dependent). Center flange prevents tilting of carrier.

Size Approximately: 1" wide x 2-1/2" high.

Weight: 1400AL Channel 1' - 10 oz.

JOEL THEATRICAL RIGGING CONTRACTORS

375 Watline Ave, Mississauga, On, L4Z 1P3
1-905-890-8802 | JOELTHEATRICAL.COM



JOEL RIGGING CURTAIN MACHINE

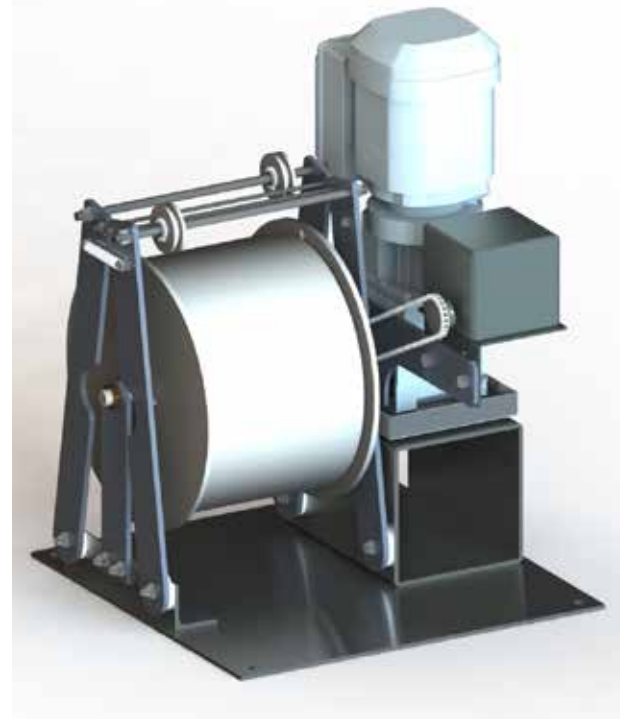
MOTORIZED AUTOMATIC CURTAIN DRAW MACHINE

JOEL Rigging motorized curtain machines are ideal for Acoustic and Stage drapery applications.

Provides 160 FPM operation of a bi-parting system, with total travel of 90 feet for the longest acoustic drapery situations.

Supplied with end of travel limits and optionally unlimited stopping points in between.

Features a 10" diameter drum, with out-board support for long service life.



The Standard configuration comes with:

FEATURES

- 3 ph Gearmotor
- 208VAC operation, other voltages available upon request
- End of travel limit switches
- Cable tensioning device
- Mounted on a common baseplate
- 80 FPM Operating Line Speed, Variable Speed available
- Encoder available for precise drapery control
- Compact footprint to maximize storage space within drapery pockets

JOEL RIGGING CURTAIN MACHINE

MOTORIZED AUTOMATIC CURTAIN DRAW MACHINE



FRONT VIEW



TOP VIEW



TOP VIEW

JOEL THEATRICAL RIGGING CONTRACTORS
375 Watline Ave, Mississauga, On, L4Z 1P3
1-905-890-8802 | JOELTHEATRICAL.COM



JOEL RIGGING

STAGING, RISERS & LIFTS

PRODUCT CATALOG



SCAPIN

STAGE RISERS



JOEL
SHOWSDT

STAGE RISER SCAPIN

SHOWSDT's Scapin riser is one of the most durable risers on the market, thanks to quality components such as aluminum extrusion and a 1" (24mm) birch plywood top. It can be used both indoors and outdoors.

The Scapin is modular, with its Dual Lock attachment system and different formats, it can be used to create stage structures, multi-level bleachers, podiums etc. (round stage available with this model).

In its standard version, it comes with four round aluminum legs with protective underlays, and a load capacity of 100 Lbs per square foot. It can also be fitted with accessories. (Stairs, leveling pads, handrails, carts, railings, stage skirts and fasteners, chair bumpers, wheel adapters, etc.).

ADVANTAGES :

Flexibility: The stage risers are held together with a Dual Lock fastening system to create a uniform surface. Installation is made easy by using a single hexagonal key to tighten the legs and connect the Dual Lock connectors.

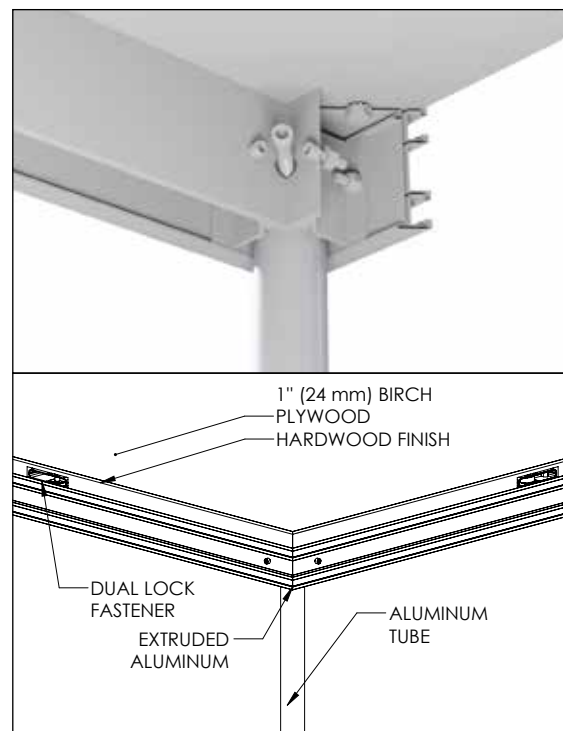
Space saver: Each unit is only 4 inches thick (100 mm) allowing for easy storage in tight spaces. Maximize your storage space with our easy to handle transport and storage trolley.

Durability: Should a Dual Lock fastener, a leg mounting bracket or even an extruded section become damaged, any element can be unbolted from the platform and replaced by a new part without having to change the whole unit.

Modularity: The configuration possibilities are almost limitless. The Scapin can adapt to all your configuration needs.

Reliability: The simple and solid concept of the Scapin stage riser is covered by a first rate one-year warranty against manufacturing defects.

The Standard configuration comes with:



Dual Lock



FEATURES

- Extruded aluminum alloy 6061-T6
- 1" (24 mm) birch plywood
- Can support a load of 100 lbs/sq ft
- Made in Canada in our workshops

Options :

- Custom-made: We can manufacture products of many shapes and sizes.
- Surface can be fireproofed for extra safety.
- Many finishes and colours available on request.



STAGE RISER SCAPIN

STANDARD UNIT WEIGHTS AND SIZES

● 2' X 4'	0,61 m X 1,22 m	48lb / 22kg	● 3' X 8'	0,92 m X 2,44 m	110lb / 50kg
● 2' X 6'	0,61 m X 1,83 m	63lb / 29kg	● 4' X 4'	1,22 m X 1,22 m	77lb / 35kg
● 2' X 8'	0,61 m X 2,44 m	81lb / 37kg	● 4' X 6'	1,22 m X 1,83 m	107lb / 49kg
● 3' X 4'	0,92 m X 1,22 m	63lb / 29kg	● 4' X 8'	1,22 m X 2,44 m	135lb / 61kg
● 3' X 6'	0,92 m X 1,83 m	84lb / 38kg	<i>Note: Custom-made sizes available on request.</i>		

ACCESSORIES



An assortment of accessories is also available:

Stairs, ramps, trolleys, spiders, guardrails, stage skirts, chair bumpers, wheel adapters, etc.



EL PRESIDENTE

STAGE RISERS



STAGE RISER EL PRESIDENTE

The El Presidente stage risers can support a load of up to 100 pounds per square inch. The new extruded concept allows you to safely attach a wide array of accessories and decor elements with unistrut bolts. Six square aluminum legs ensure great stability and neoprene pads are supplied to protect floor covering.

ADVANTAGES:

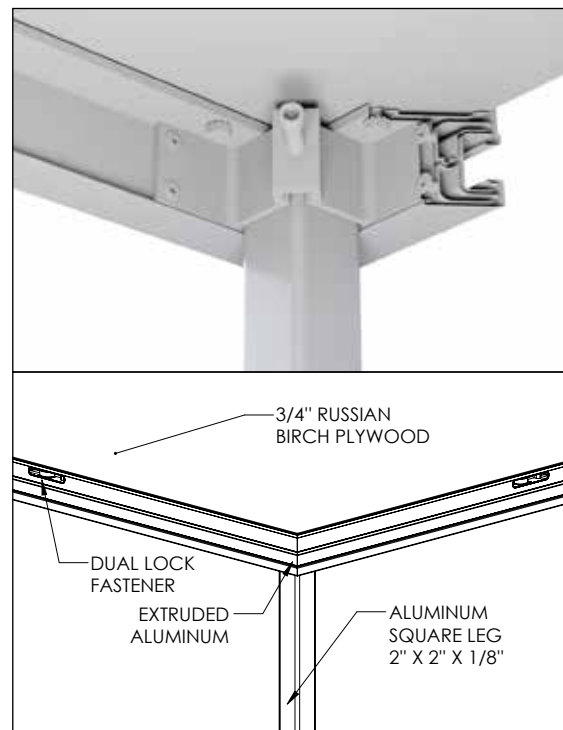
Flexibility: The stage risers are held together with a Dual Lock fastening system to create a uniform surface. Installation is made easy by using a single hexagonal key to tighten the legs and connect the Dual Lock connectors.

Space saver: Each unit is only 3 inches thick (75 mm) allowing for easy storage in tight spaces. Maximize your storage space with our easy to handle transport and storage trolley.

Durability: Should a Dual Lock fastener, a leg mounting bracket or even an extruded section become damaged, any element can be unbolted from the platform and replaced by a new part without having to change the whole unit.

Mobility: The configuration possibilities are almost limitless. El Presidente can adapt to all your configuration needs.

Reliability: The simple and solid concept of the El Presidente stage riser is covered by a first rate one-year warranty. All parts have been designed to be easily replaced.



The Standard configuration comes with:

FEATURES

- Extruded aluminum alloy 6061-T6
- 0.75" Russian birch plywood
- Can support a load of 100 lb/sq in
- Made in Canada in our workshops

Options :

- Custom-made: We can manufacture products of many shapes and sizes.
- Surface can be fireproofed for extra safety.
- Many finishes and colours available on request.



Dual Lock

STAGE RISER EL PRESIDENTE

STANDARD UNIT WEIGHTS AND SIZES

● 2' X 4'	0,61 m X 1,22 m	43,5 lb / 19,8 kg	● 4' X 4'	1,22 m X 1,22 m	69lb / 31,2kg
● 2' X 8'	0,61 m X 2,44 m	81 lb / 36,75 kg	● 4' X 6'	1,22 m X 1,83 m	94lb / 42,6kg
● 3' X 8'	0,92 m X 2,44 m	107lb / 48,5kg	● 4' X 8'	1,22 m X 2,44 m	120lb / 54,4kg

Note: Custom-made sizes available on request.

ACCESSORIES



An assortment of accessories is also available:

Stairs, ramps, trolleys, cross-braces, guardrails, stage skirts, chair bumpers, wheel adapters, etc.



JOEL SHOWLIFT



The ShowLift is a variable height staging platform or riser. It can be used in a variety of applications where surface levels need to be adjusted to serve different types of events.

The ShowLift is a fully customized product and can therefore be fabricated to meet different travel distances, sizes, shapes and finishes.

The movement of the ShowLift can be via a simple ½" drill adaptor, a fixed speed motor with limit switches or a motion-controlled system with preset positions.

The ShowLift can support a maximum static live load on the deck of 5KN/m² (104.43 psf) and a maximum concentrated load on the decks of 3kn over a surface of 300mm² (675 lbs psf).

Engineered and manufactured in Canada.



SHOWLIFT DURING INSTALLATION AT MASSEY HALL



DRILL ADAPTOR

Please call us for additional information.

JOEL THEATRICAL RIGGING CONTRACTORS
375 Watline Ave, Mississauga, On, L4Z 1P3
1-905-890-8802 | JOELTHEATRICAL.COM

THERIO
INNOVATION
Engineering

Ti

SHOWLIFT

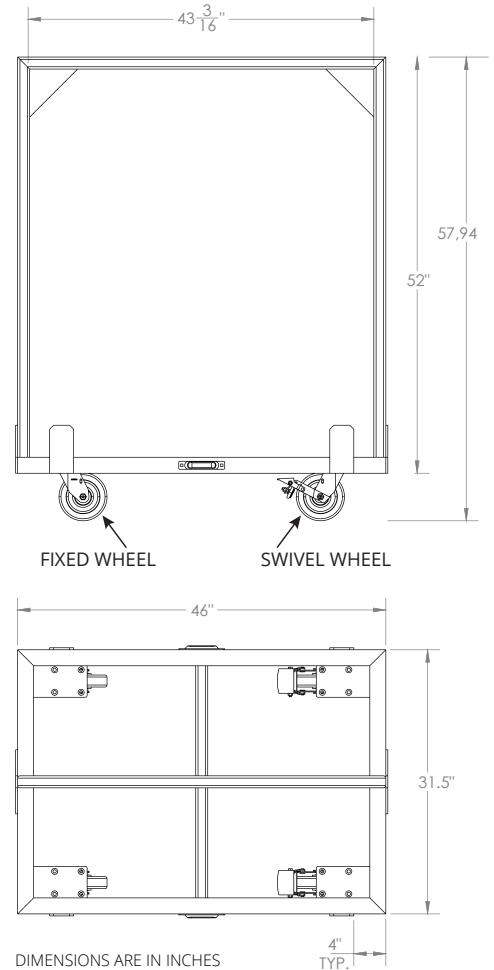
JOEL
SHOWLIFT



STAGING ACCESSORIES

MOVE & STORE CARTS

Move and store as many as 6 **SHOWSDT** platforms at a time. Move & Store Carts move easily down hallways, around corners, and over thresholds. If you have to go up or down a stairway, two people can easily carry the decks separately.



The Standard configuration comes with:

FEATURES

- 4 casters (2 with brakes, 2 without brakes)
- Easy setup and tear-down
- Can be set up by one person, no tools required
- Compatible with 4'x8' or others platform sizes
- Provides storage for 6 platforms

JOEL THEATRICAL RIGGING CONTRACTORS
375 Watline Avenue, Mississauga, On, L4Z 1P3
1-905-890-8802 | JOELTHEATRICAL.COM



GALA LIFT

SPIRALIFT TECHNOLOGY

The Spiralift is the basic component of some of the best world-renowned platform lifts such as orchestra, stage and piano lifts. This technology uses two bands of intertwining stainless steel to form a strong and stable column. The Spiralift requires relatively low-power electric motor drives thanks to its very high mechanical efficiency.

Spiralift units can be configured easily in modular designs to suit any platform geometry and building architecture. Multiple units can be linked to the same drive train and fully synchronized.

JOEL RIGGING is an authorized service center for GALA Spiralifts.



LIVING ARTS CENTRE, MISSISSAUGA

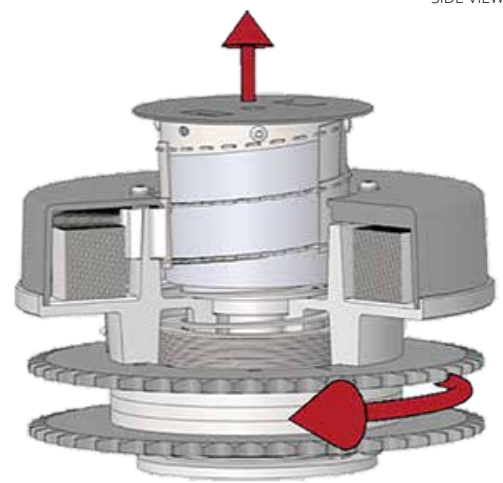
The Standard configuration comes with:

FEATURES

- Compact closed height
- Reliable
- Does not require excavation
- Easy to install
- Adaptable
- Minimal maintenance
- Sturdy



SIDE VIEW



TECHNICAL VIEW

TECHNICAL DATA

Contact GALA SYSTEMS for specific product information
<https://www.galasystems.com/en/spiralift/>

JOEL THEATRICAL RIGGING CONTRACTORS

375 Watline Ave, Mississauga, On, L4Z 1P3
1-905-890-8802 | JOELTHEATRICAL.COM



GALA SYSTEMS INC.



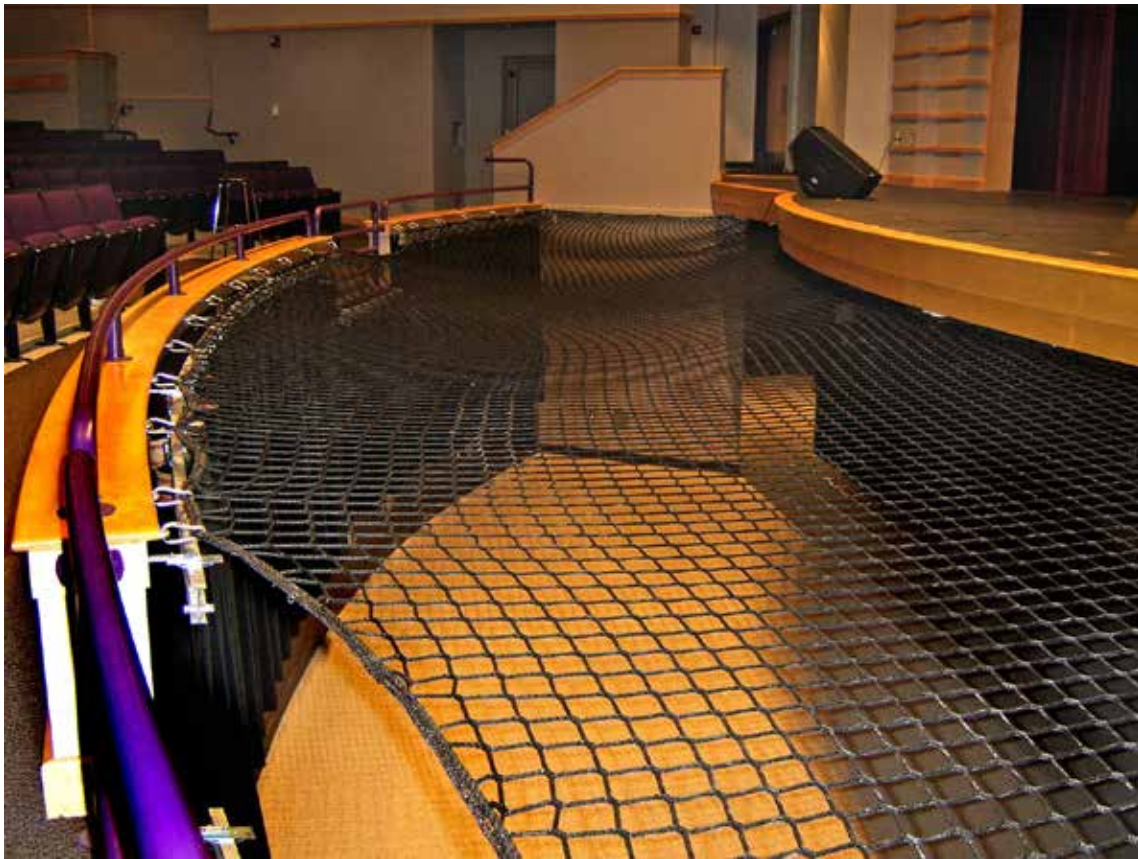
JOEL RIGGING

ORCHESTRA PIT NET

Theatre environments host a variety of fall hazards and dropped-object potential. Maintaining the safety of crew, cast, and audience members is the vital requirement of any theatre. The success of your operation depends upon it.

JOEL RIGGING offers safety products to address the unique hazards of a theatre venue. Orchestra pit nets, catwalk safety systems, and forestage guards combine to provide complete protection for theatres of all sizes. JOEL RIGGING's theatrical netting experts can help bring your theatre into compliance while ensuring the safety of performers and audience alike.

Custom made to your specifications



JOEL THEATRICAL RIGGING CONTRACTORS
375 Watline Ave, Mississauga, On, L4Z 1P3
1-905-890-8802 | JOELTHEATRICAL.COM



JOEL RIGGING SAFETY & TOOLS

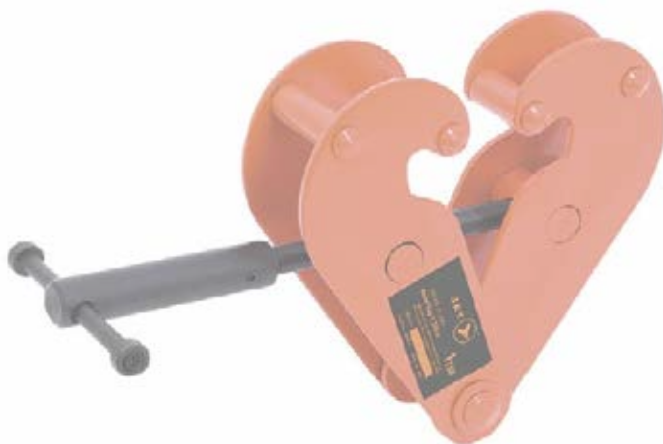
PRODUCT CATALOG



PRO
SERIES



CONTRACTOR
SERIES



SHOWSDT

JOEL RIGGING HARNESS PRO SERIES

The Pro Series harness (V8006110) is the gold standard harness. With its legendary comfort, this harness can be worn comfortably all day long when working at heights.

The Standard configuration comes with:

FEATURES

- Hi-Viz green top and black bottom is easily distinguishable
- Five points of adjustment provides an ideal fit (two leg, two torso, and one chest)
- Padded shoulder, back, and leg straps provide all-day comfort
- Included trauma straps help reduce the effects of suspension trauma
- Fall indicator for easier inspection before use
- Available as a harness & belt or just the harness
- Meets or exceeds all applicable OSHA standards
- Certified to both ANSI Z359.11 and CSA Z259.10 standards



TECHNICAL DATA

Product N°	Model N°	Trauma strap	Class	Harness Weight	Buckle Type	D-Ring Location
● V8006110	FBH-60110B	Yes	AP	4 lbs.(1.8kg)	Chest & Legs Stab lock Torso Friction	1 Back 2 Sides

JOEL RIGGING HARNESSES CONTRACTOR SERIES

The Contractor Series harness (V8002200) is our most popular harness. With an impressive list of features, this harness offers incredible value

The Standard configuration comes with:

FEATURES

- High-visibility color
- Five-point adjustable for a universal fit
- Available with or without a belt. Belt can be added and removed.
- Two lanyard parks on chest strap for easy storage of lanyard
- Fall indicator for easier inspection before use
- 130 to 310 lbs. capacity (60 to 141kg)
- Certified to CSA Z259.10



TECHNICAL DATA

Product N°	Model N°	Trauma strap	Class	Harness Weight	Buckle Type	D-Ring Location
● V8002200	FBH-10020A	No	A	3 lbs. (1.4kg)	Chest Pass-Thru Legs Grommet Torso Friction	1 Back

JOEL RIGGING supplies life safety equipment for working at heights in addition to designing and installing the infrastructure required for attaching this equipment to. Call us for additional information.

JOEL THEATRICAL RIGGING CONTRACTORS

375 Watline Ave, Mississauga, On, L4Z 1P3
1-905-890-8802 | JOELTHEATRICAL.COM



JOEL RIGGING LANYARDS

Connecting you safely. Lanyards are engineered products, and the critical connection component between the full body harness and the anchor. They are sometimes referred to as connectors. Our lanyards are designed and tested to comply to strict CSA standards. JOEL RIGGING offers a wide variety of lanyards to suit a wide range of applications.

The Standard configuration comes with:

FEATURES

- Approved for use in vertical and horizontal applications
- Tested and approved for foot level tie-off
- Additional testing over alternate leading edge materials
- Carabiner hook included for attachment to anchor point
- Aluminum housing for maximum durability
- 3/16" (5mm) galvanized cable lifeline
- LE minimum fall clearance: 13 ft. (4m)
- Certified to CSA Z259.2.2-98 for non-Leading Edge applications



JOEL RIGGING supplies life safety equipment for working at heights in addition to designing and installing the infrastructure required for attaching this equipment to. Call us for additional information.

TECHNICAL DATA

Product N°	Model N°	Lifeline Type	Length	Weight	Hook Style	Capacity
● V8455330	SRL-53302-20LE	3/16" (5mm)	20' (6m)	7 lbs. (3 kg)	3/4" Snap Hook	300 lbs. (136kg)

JOEL THEATRICAL RIGGING CONTRACTORS
375 Watline Ave, Mississauga, On, L4Z 1P3
1-905-890-8802 | JOELTHEATRICAL.COM



JOEL RIGGING BEAM CLAMP

SAFETY BEAM CLAMP

Overhead beam clamps are designed to attach to overhead structure without the aid of any tools. Simply adjust the size of the clamp to the bottom flange of the beam, lock it in place and its ready to go. The beam anchors provide a safe and practical solution to connecting to overhead beams. JOEL RIGGING carries the Sliding version—which can follow the worker to prevent a swing fall This model has a breaking strength of 5,000 lbs. (22kN).



TECHNICAL DATA

Product N°	Model N°	Product Name	Size of beam	Style
● V8222150	CP-11010-3	Aluminum Super Sliding Beam	3.5" to 12" (88.9mm to 304.8mm)	Sliding

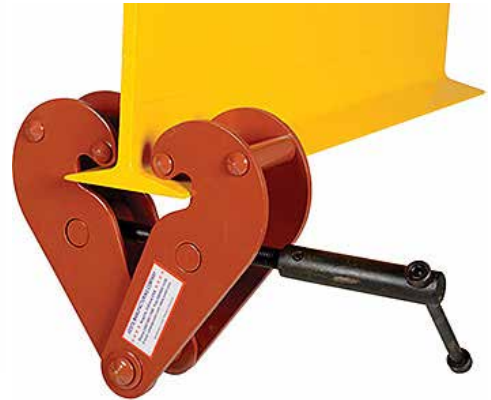
JOEL RIGGING supplies life safety equipment for working at heights in addition to designing and installing the infrastructure required for attaching this equipment to. Call us for additional information.

JOEL THEATRICAL RIGGING CONTRACTORS
375 Watline Ave, Mississauga, On, L4Z 1P3
1-905-890-8802 | JOELTHEATRICAL.COM



JOEL RIGGING BEAM CLAMP

VBC SERIES - Model # VBC-1 - 1 TON



The Standard configuration comes with:

FEATURES

- Robust, all steel construction
- Can be adjusted to fit securely on a wide range of flange and beam widths
- Meets ANSI B30.11 specifications (certificate included)
- Tested to 125% of rated capacity
- Built in suspension bar provides ultra-low headroom
- Extension kits available for use on larger beam widths

JOEL THEATRICAL RIGGING CONTRACTORS
375 Watline Ave, Mississauga, On, L4Z 1P3
1-905-890-8802 | JOELTHEATRICAL.COM



JOEL RIGGING

CHAIN FALL HOIST

CHAIN HOIST - Model # L90X-1002- 10' LIFT - 1 TON

The Standard configuration comes with:

FEATURES

- The strongest chain hoist available!
- Exclusive Class V+ load chain is the world's strongest grade
- Provides unparalleled safety for the most demanding applications
- Chrome Molybdenum load gears for maximum strength and resistance to shock
- Load sheave is designed for long wear with uniform pockets for correct chain contact
- Drop forged hooks are designed to bend slowly to warn of overloads
- Rolled edge on hand wheel cover acts as a chain guide and allows smooth operation even when pulling the hand chain at an angle
- Positive ratchet, screw and disc are completely enclosed to protect the brake mechanism
- Non-asbestos wet friction brake discs will not slip even when oil is present
- Electrostatic powder coated before assembly to protect against rust and corrosion
- Capacity unaffected by temperatures up to -40°C with suitable winter lubrication
- Tested to 150% of rated capacity

NOTE:

Custom Lifts are available in any length desired. Ask JOEL RIGGING for details!



JOEL THEATRICAL RIGGING CONTRACTORS

375 Watline Ave, Mississauga, On, L4Z 1P3
1-905-890-8802 | JOELTHEATRICAL.COM



JOEL THEATRICAL RIGGING CONTRACTORS
375 Watline Ave, Mississauga, On, L4Z 1P3
1-905-890-8802 | **JOELTHEATRICAL.COM**

